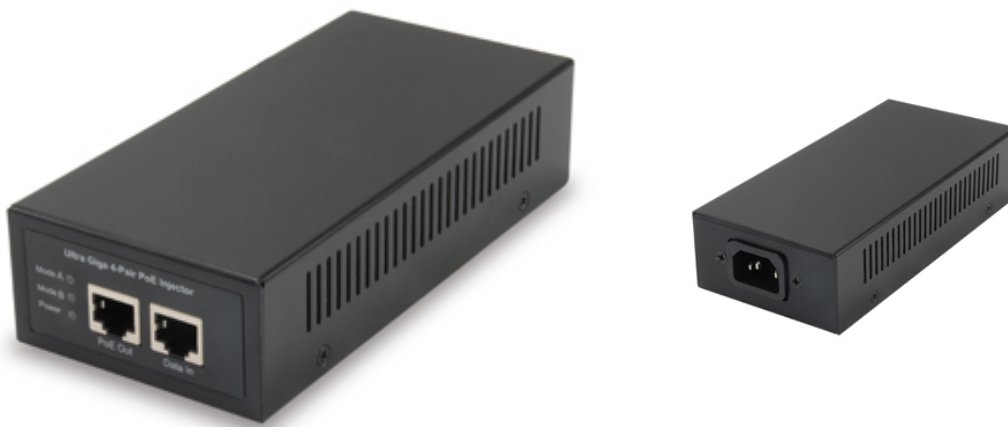


POI-5002W90 Gigabit PoE Injector, 802.3af/at/bt, 90W

Product Images



Short Description

- Auto-detection and protection of non-standard PoE devices
- IEEE 802.3af/at/bt PoE compliant to simplify deployment and installation
- Total PoE power budget: 90W,

Description

POI-5002W90 is a single port, high-power 90W PoE PSE solution for remote PoE PD devices. Generating up to 90W through 8 pins, POI-5002 supplies remote power for new applications such as wireless access points, pan-tilt-zoom (PTZ) IP cameras, lighting, panel display for digital signage and video-phones. It complies to IEEE 802.3bt PoE standards to deliver 90W on both end-point and midspan pairs with a total power of 90W PoE output. It can work with 10/100Base-T networking devices and emerging 1000Base-T devices such as Wi-MAX and wireless IEEE 802.11n access points.

Additional Information

Operating humidity	0% RH ~ 95% RH
Operating temperature	0°C ~ 40°C
Indicators	Power, Mode A, Mode B
Mount	Wall mount
Power Output	56VDC 90W
Standards	IEEE 802.3at/af/bt IEEE 802.3 10-BASE-T IEEE 802.3u 100-BASE-TX IEEE 802.3ab 1000BASE-T
Features	1-port GigE Ultra PoE Injector
Product weight (kg)	0,53
Color	Black
EAN	4015867227558
Model Number	POI-5002W90
Package contents	POI-5002W90 Power Cord
Grade	Commercial
Data Rate	Gigabit Ethernet
Data rate	10/100/1000Mbps
Dimensions (W x D x H)	180 x 71 x 37 mm

