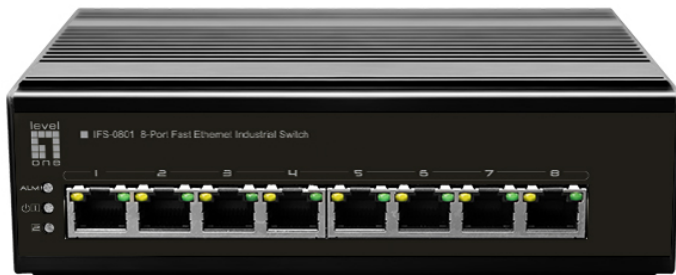


# IFS-0801, 8-Port Fast Ethernet Industrial Switch, DIN-Rail, -40°C to 75°C

## Product Images

---



## Short Description

---

- Provides flexibility of 8 x 10/100BASE-TX ports
- 10/100Mbps, full/half-duplex, auto-negotiation, auto-MDI/MDIX
- Provides DIN-rail, wall or desktop mounting
- Redundant power inputs with Terminal Block

## Description

---

LevelOne IFS-0801 Industry Ethernet Switch provides 8 ports 10/100Base network at mission-critical environment. With the industrial standard DIN-rail mount; this switch can be easily installed in the cabinet, plus the clearly visible status LEDs provide simple monitoring of port link activity.

## Additional Information

---

Approval and compliance	CE/FCC Surge: 6KV, standard: IEC61000-4-5 ESD: 6KV: contact / 8KV: air, standard:IEC61000-4-2
Operating humidity	0% RH ~ 95% RH
Operating temperature	-40°C ~ 75°C
Storage humidity	0% RH ~ 95% RH
Storage temperature	-40°C ~ 85°C
Backplane (Gbps)	1.6 Gbps
Packet buffer	1M
Indicators	Power Act/Link
MAC address table	8K
Mount	DIN rail mount
Power supply	Optional, VDC 12~60V
Standards	IEEE 802.3 10-BASE-T (Ethernet) IEEE 802.3u 100-BASE-TX (Fast Ethernet) IEEE 802.3x Flow Control (full-duplex flow control)
Product weight (kg)	0.45
Color	Black
EAN	4015867223932
Model Number	IFS-0801
Package contents	IFS-0801 Power Terminal Block Quick Installation Guide
Grade	Industrial
Data Rate	Fast Ethernet
PoE Supported	No
Manageable	No
Fanless	Yes
Concurrent ports	Total8.00
Dimensions (W x D x H)	165 x 114 x 50 mm

