



## HDMI 2.0 Active Optical Cable AM/AM

119430 / 119431 / 119432 / 119433

The Equip 11943x series Active Optical Cable (AOC) is a cabling technology that accepts the same electrical inputs as a traditional copper cable but uses optical fibre between the connectors to extend HDMI signals with zero loss or latency. Our hybrid cable design consists of optical fibres and copper wires. The high-speed TMDS signals are transmitted through the optical multimode fibres, while the low frequency control signals are transmitted through the copper wires. The range of active optical leads give you up to 100m of distance without a drop of signal quality or the requirement of a separate power supply.

### | Specification

<b>Connectors</b>	2 x HDMI Type A Male
<b>Cable Diameter</b>	4..8mm
<b>Cable length</b>	119430: 30.0m
	119431: 50.0m
	119432: 70.0m
	119433: 100.0m

### | Ordering Information

PN	EAN
119430	4015867222577
119431	4015867222584
119432	4015867222591
119433	4015867222607

### | Key Features

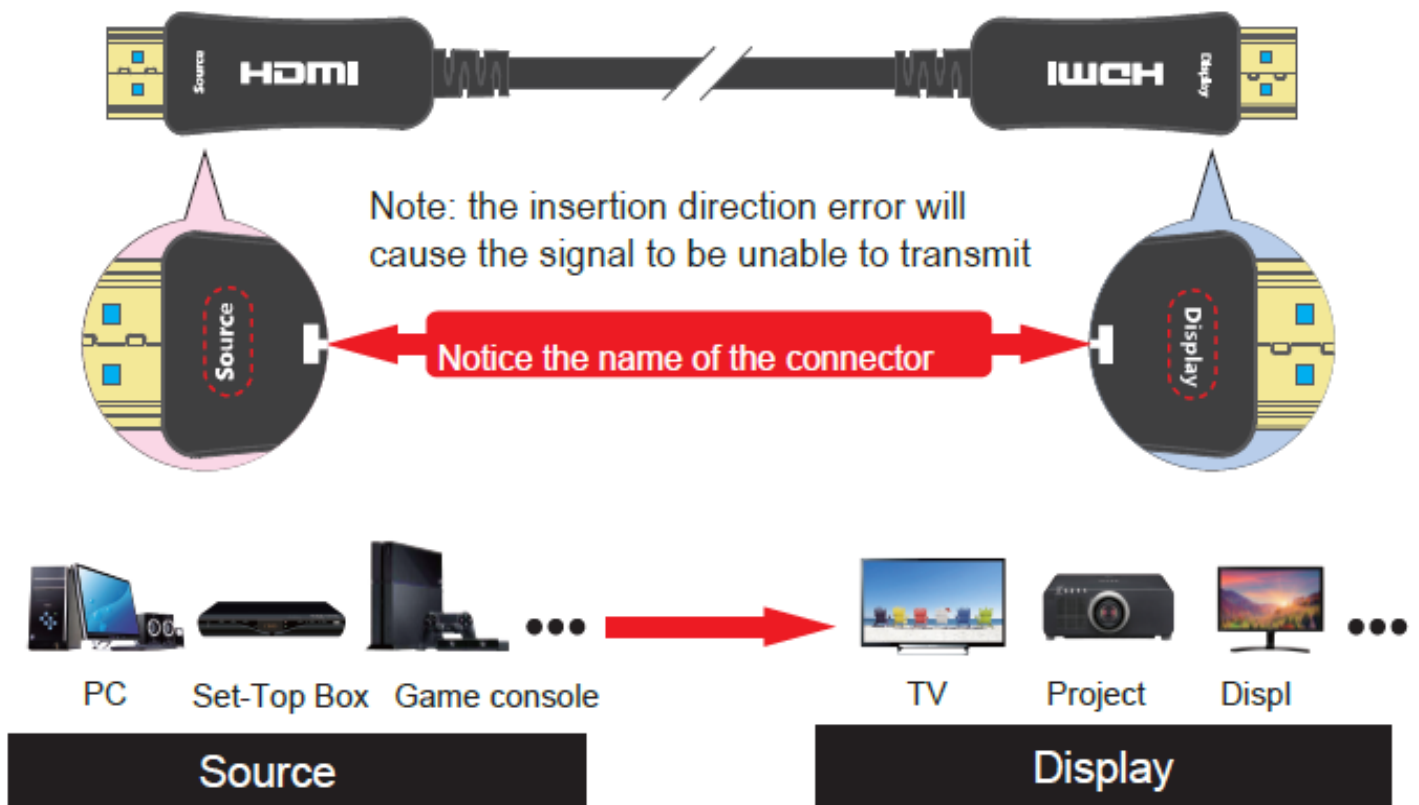
- HDMI version 2.0
- Supports HDMI Ethernet Channel (HEC)
- Bandwidth up to 18Gbps
- Supports video resolutions up to 4K/60Hz
- Dynamic HDR (HDR Dynamic Metadata)
- Support 3D and Audio Return Channel (ARC)
- Zinc Alloy housing

### | Package Contents

- 1 x HDMI AOC Cable

Packing: Equip Zip-bag

## Connection Directoin



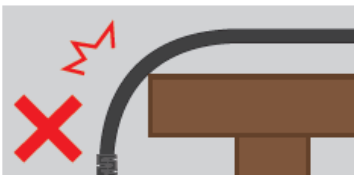
Source: Connect signal output device, such as Set top box, DVD, PC and Game console. Display: Connect signal input device; such as TV, Projector, Display.

## Attention

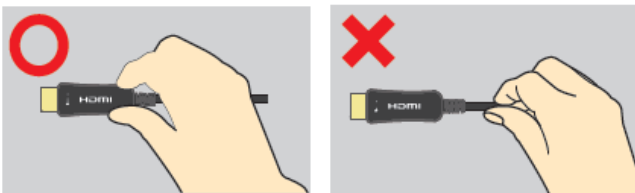
To prevent deterioration and breaking of the internal fiber, always ensure minimum bending semicircle. When laying, because you pull the cable, pay attention to torsion and tension to ensure that the bending radius is above 40mm.



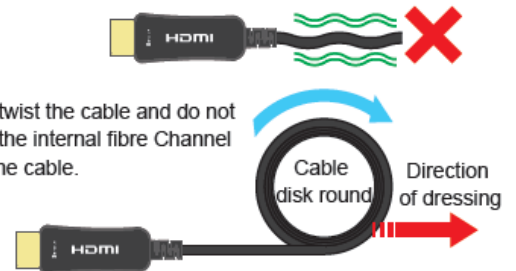
When laying the cable, pay attention to the angle of the machine, etc., be careful not to touch the sharp angle of the machine and equipment.



Note when reseating the HDMI connector. When inserting or removing the connector, gently insert it with the connector part. If tension or force is applied, it may lead to breakage, broken wires, faults.



Be careful not to twist the cable and do not apply tension on the internal fibre Channel while loosening the cable.



The HDMI connector cannot be suspended, the connector's junction will be deformed, and the internal fiber may be disconnected.



When handling excess cables, follow the circle winding above the diameter of 80mm and do not apply pressure to the connector junction.

