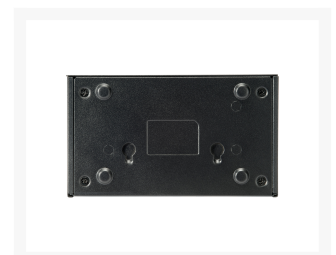


GEU-0523 5-Port Gigabit Switch

Product Images



Short Description

1. Minimize carbon footprint with advanced energy efficient technology (IEEE 802.3az)
2. 10/100/1000Mbps wire speed transmission and reception
3. Supports 2K MAC address auto-learning and auto-aging
4. 9K jumbo frames to increase data transfer rates
5. Provides wall or desktop mounting
6. 5 Gigabit Ethernet ports

Additional Information

Power Saving	YES
Packet forwarding rate	1488000pps
Transmission Method	Store- froward
Power input	DC 5V/0.5A
Max. operating humidity (%)	90
Max. operating temperature (°C)	40
Max. storage humidity (%)	90
Max. storage temperature (°C)	70
Min. operating humidity (%)	10
Min. storage humidity (%)	5
Min. storage temperature (°C)	-40
Backplane (Gbps)	10Gbps
Indicators	Power Loop LINK/ACT 1000M Power Loop LINK/ACT 1000M Power Loop LINK/ACT 1000M
Jumbo frame (KB)	9
MAC address table	2K
RAM size	8kbit
Flash memory size	1024
Power switch	No
Processor	MT7530D
QIG language	DE, EN, ES, FR, IT, PT
Manual languages	EN
General features	5 x 10/100/1000Mbps
Product weight (kg)	0,17
Product breadth (mm)	124
Product depth (mm)	72

Product height (mm)	24
Color	Black
EAN	4015867222256
Model number	GEU-0523
Package contents	GEU-0523 Power Adapter Quick Installation Guide GEU-0523 Power Adapter Quick Installation Guide GEU-0523 Power Adapter Quick Installation Guide
Switching capacity	10Gbps

