



LevelOne

WUA-1810

**AC1200 Dual Band Wireless USB Network
Adapter**

Quick Installation Guide

English

Português

Deutsch

Italiano

Français

Español

This guide covers only the most common situations.
All detail information is described in the user manual.

English

Setup


Step1: Connect to a Computer

1.1 Turn on your PC, insert USB WiFi Adapter to USB port of your PC



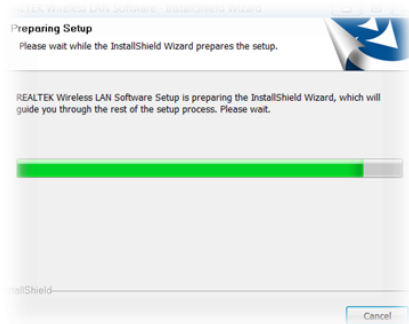
1.2 From the packaging CD into the computer



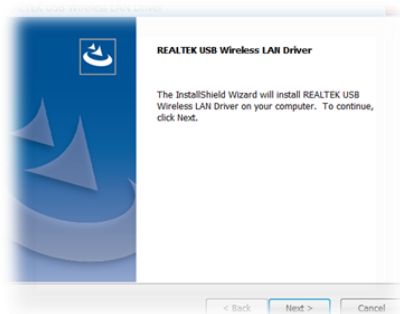
1.3 Open the folder to find Driver → windows and then click  to start the installation.

Step2: Driver software installation

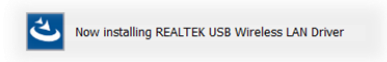
2.1 In the below interface, please wait, please do NOT click the "Cancel" button; otherwise, installation will stop



2.2 In the below interface, please click "Next" button to continue with the installation.



2.3 In the below interface, please wait



2.4 In the below interface, please wait



Now installing Cisco EAP-FAST

In the below interface, please select "Yes, I want to restart my computer now." and then click the "Finish" button to restart your computer.



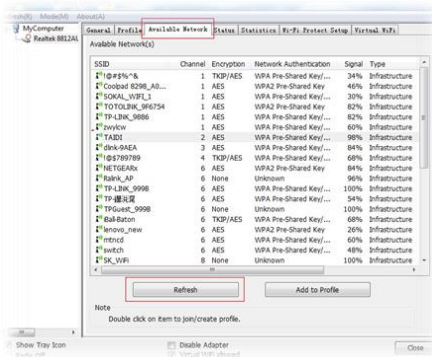
2.5 Complete installation

Step3 : Wireless connection

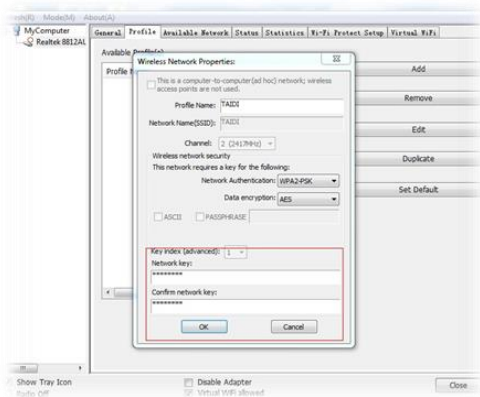


3.1 Please open the installation application

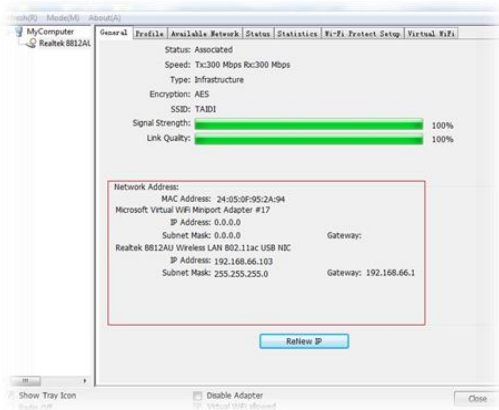
3.2 Click Available Network



3.3 Select wireless input password to connect



3.4 View the information



Konfiguration

Schritt 1: Mit einem Computer verbinden

- 1.1 PC einschalten, USB-WLAN-Adapter in den USB-Port Ihres PCs stecken



- 1.2 CD aus der Verpackung in den Computer einlegen



- 1.3 Ordner öffnen und nach Treiber > Windows suchen, dann

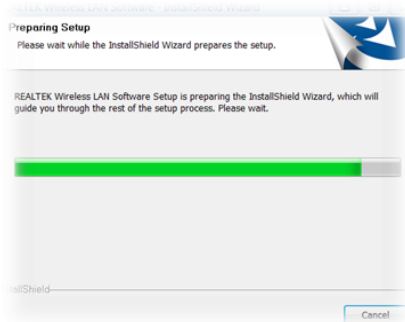


zum Starten der Installation anklicken

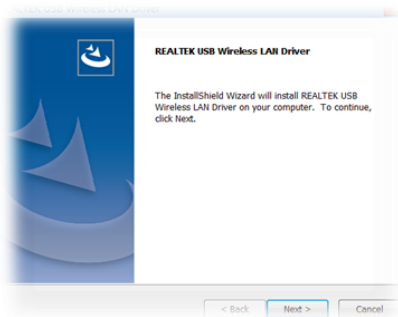
Schritt 2: Treibersoftware installieren

2.1 Bitte warten Sie, wenn der nachstehende Bildschirm erscheint.

Klicken Sie nicht auf „Abbrechen“; andernfalls stoppt die Installation



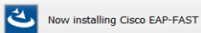
2.2 Klicken Sie am nachstehenden Bildschirm zum Fortsetzen der Installation auf „Weiter“.



2.3 Warten Sie, wenn der nachstehende Bildschirm erscheint



2.4 Warten Sie, wenn der nachstehende Bildschirm erscheint



Wählen Sie am nachstehenden Bildschirm „Ja, ich möchte meinen Computer jetzt neu starten“. Klicken Sie dann zum Neustarten Ihres Computers auf „Fertigstellen“.



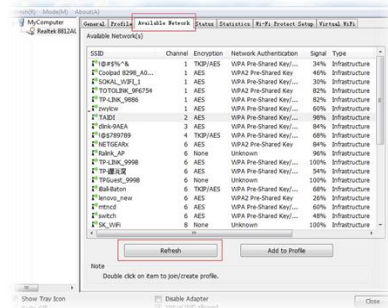
2.5 Installation abschließen



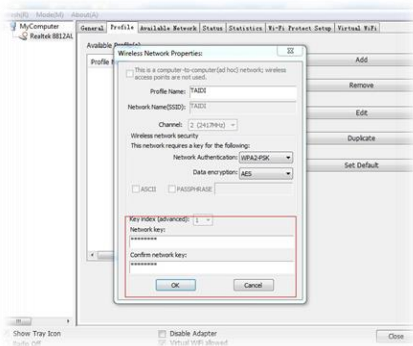
Schritt 3: WLAN-Verbindung

3.1 Installationsanwendung öffnen

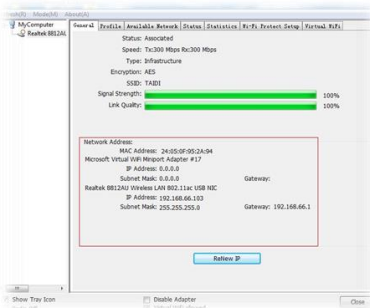
3.2 Verfügbares Netzwerk anklicken



3.3 Zum Verbinden das WLAN-Eingabekennwort wählen



3.4 Informationen anzeigen



Français

Installation

Étape 1 : Connexion à un ordinateur

- 1.1 Allumez votre PC, insérez l'adaptateur USB Wi-Fi dans le port USB de votre PC



- 1.2 Depuis le CD de l'emballage jusqu'à l'ordinateur



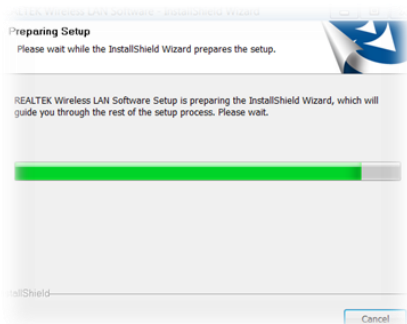
- 1.3 Ouvrez le dossier pour trouver Pilote --> Windows, puis cliquez



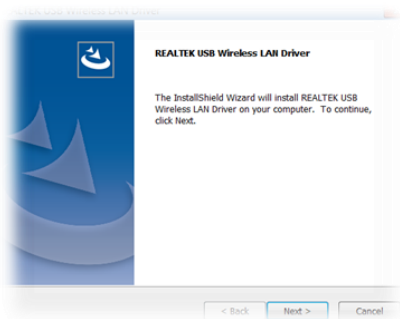
pour démarrer l'installation

Étape 2 : Installation du logiciel pilote

2.1 Dans l'interface ci-dessous, veuillez patienter, veuillez NE PAS cliquer sur le bouton « Annuler » ; dans le cas contraire, l'installation s'arrête.



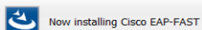
2.2 Dans l'interface ci-dessous, veuillez cliquer sur le bouton « Suivant » afin de poursuivre l'installation.



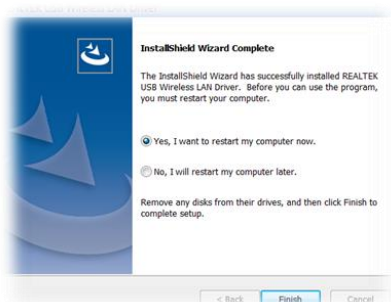
2.3 Dans l'interface ci-dessous, veuillez patienter.



2.4 Dans l'interface ci-dessous, veuillez patienter



Dans l'interface ci-dessous, veuillez sélectionner « Oui, je souhaite redémarrer mon ordinateur maintenant. », puis cliquez sur le bouton « Terminer » pour redémarrer votre ordinateur.



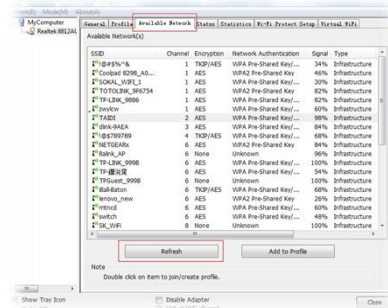
2.5 Terminez l'installation



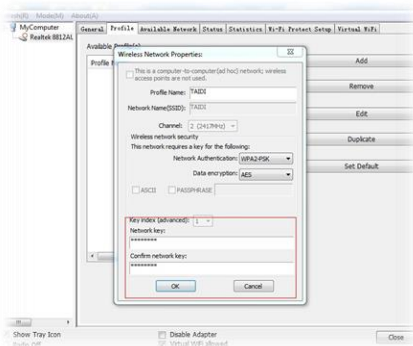
Étape 3 : Connexion sans fil

3.1 Veuillez ouvrir l'application d'installation

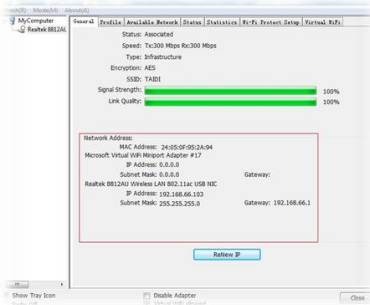
3.2 Cliquez sur Réseau disponible



3.3 Sélectionnez le mot de passe sans fil pour vous connecter.



3.4 Visualisez les informations.



Instalación


Paso 1: Conectar a su ordenador

- 1.1 Encienda su PC, inserte el adaptador WiFi USB en el puerto USB de su PC.



- 1.2 Inserte el CD del paquete en su ordenador.

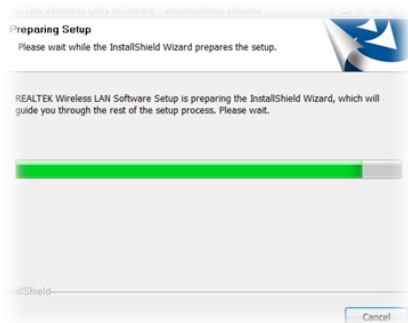


- 1.3 Abra la carpeta para buscar el controlador-->Windows y, a continuación, haga  clic para iniciar la instalación.

Paso 2: Instalación del software del controlador

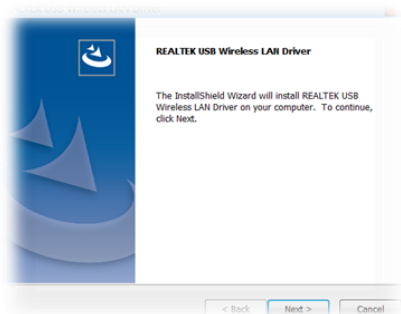
2.1 En la interfaz siguiente, espere. NO haga clic en el botón

“Cancelar”; de lo contrario, la instalación se detendrá.

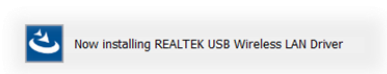


2.2 En la interfaz que figura más abajo, haga clic en el botón

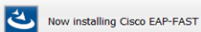
"Siguiente" para continuar con la instalación.



2.3 En la interfaz siguiente, espere.



2.4 En la interfaz siguiente, espere.



En la interfaz siguiente, seleccione "Sí, deseo reiniciar mi ordenador ahora." y haga clic en el botón "Finalizar" para reiniciar el equipo.



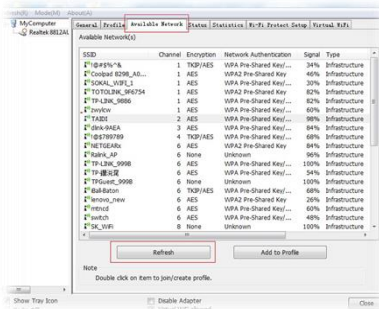
2.5 Completar la instalación



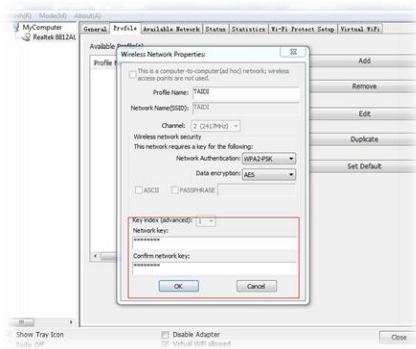
Paso 3: Conexión inalámbrica

3.1 Abra la aplicación de la instalación.

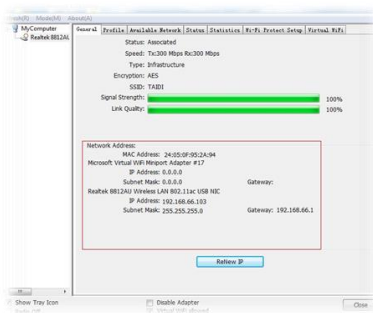
3.2 Haga clic en Redes disponibles.



3.3 Seleccione la contraseña de entrada de la conexión inalámbrica para conectarse.



3.4 Vea la información.

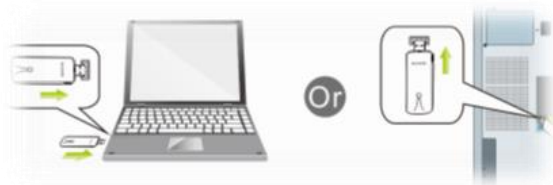


Português

Instalação


Passo 1: Ligar a um computador

- 1.1 Ligue o seu PC, insira o Adaptador WiFi USB na porta USB do PC



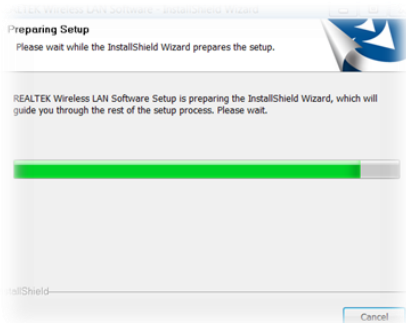
- 1.2 Insira o CD fornecido no computador



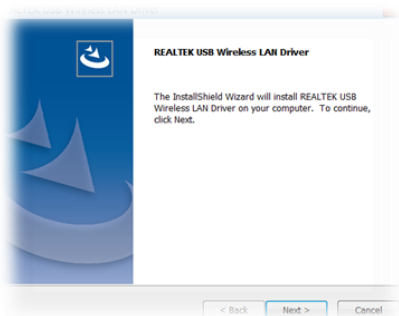
- 1.3 Abra a pasta para encontrar o Controlador --> Windows e clique  para iniciar a instalação.

Passo 2: Instalação do software do controlador

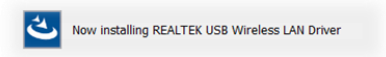
- 2.1 Na interface apresentada abaixo, aguarde, NÃO clique no botão "Cancelar", caso contrário, a instalação irá parar



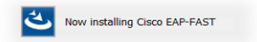
2.2 Na interface apresentada abaixo, clique no botão "Seguinte" para continuar a instalação.



2.3 Na interface apresentada abaixo, aguarde



2.4 Na interface apresentada abaixo, aguarde



Na interface abaixo, selecione "Sim, desejo reiniciar o meu computador agora." e clique no botão "Concluir" para reiniciar o computador.



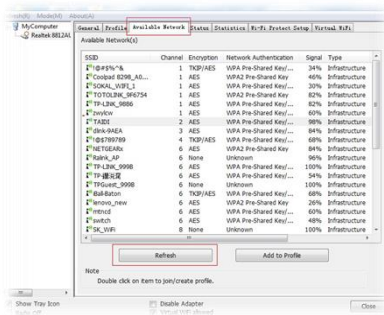
2.5 Instalação concluída



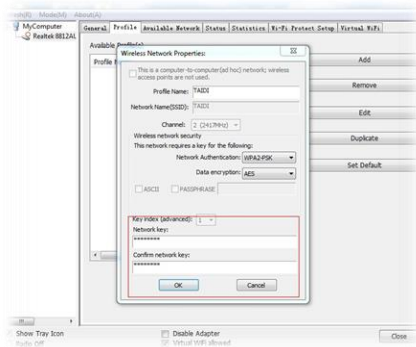
Passo 3: Ligação sem fios

3.1 Abra a aplicação de instalação

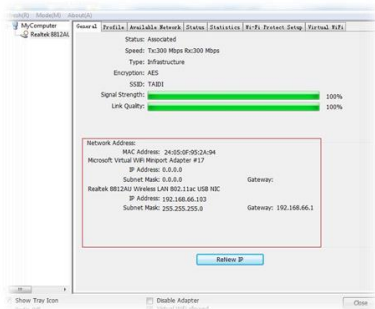
3.2 Clique em Redes disponíveis



3.3 Selecione a palavra-passe da rede sem fios para ligar.



3.4 Ver as informações.



Italian

Installazione

Fase 1: Collegare ad un computer

1.1 Accendere il PC e inserire l'adattatore WiFi USB alla porta USB del PC



1.2 Dal CD al computer



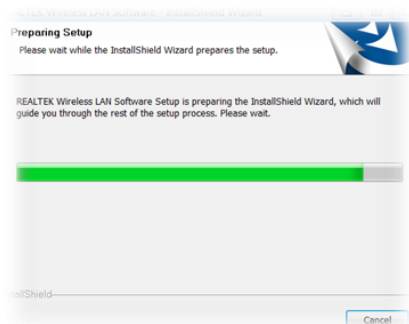
1.3 Aprire la cartella per trovare Driver -->Windows, quindi fare clic



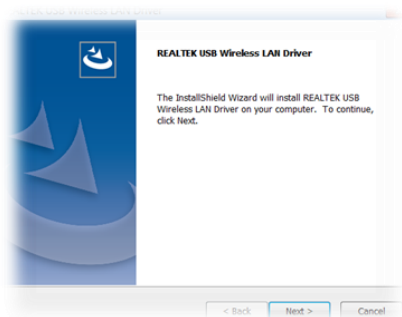
per avviare l'installazione

Fase 2: Installazione del software del driver

2.1 Nell'interfaccia inferiore, NON fare clic sul tasto "Annulla"; in caso contrario, l'installazione si arresta.



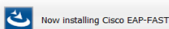
2.2 Nell'interfaccia inferiore, fare clic sul tasto "Avanti" per continuare con l'installazione.



2.3 Nell'interfaccia inferiore, attendere



2.4 Nell'interfaccia inferiore, attendere



Nell'interfaccia inferiore, selezionare "Sì, voglio riavviare il computer", quindi fare clic sul tasto "Fine" per riavviare il computer.



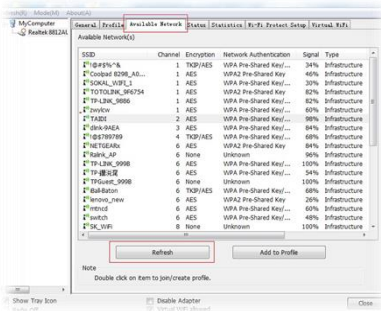
2.5 Completare l'installazione



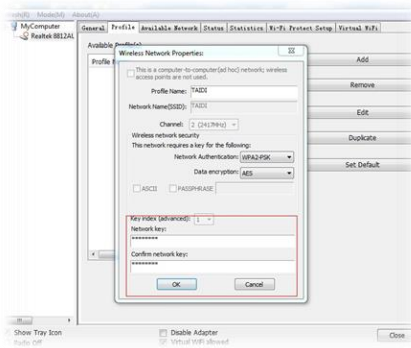
Fase 3 : Connessione wireless

3.1 Aprire l'applicazione di installazione

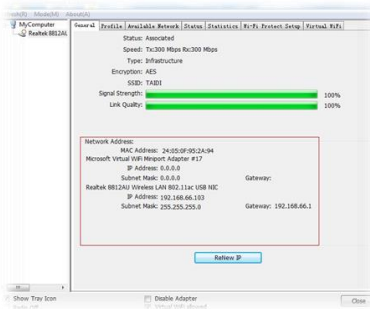
3.2 Fare clic su Reti disponibili



3.3 Selezionare la password di accesso wireless per connettersi



3.4 Visualizzare le informazioni





Verklaring van Conformite

Wij, ondergetekende, Digital Data Communications GmbH
Adres Hohe Straße 1, 44139 Dortmund, Germany

certificeert en verklaart onder eigen verantwoordelijkheid dat het volgende product

Omschrijving Wireless USB adapter
Merk LevelOne
Identificatie WUA-1810

In overeenstemming is met de essentiële eisen van de EMC richtlijn 2014/53/EU gebaseerd op de volgende normen:

EU geharmoniseerde normen

- EN 301489-1 V2.1.1:2017-02
- EN 301489-3 V2.1.0:2016-09
- EN 301489-17 V3.1.1:2017-02
- EN 300328 V2.1.1:2016-11
- EN 60950-1:2006+A11:2009+A1:2010+A12: 2011+A2:2013
- EN 62479:2010

en voldoet daarom aan de essentiële eisen en bepalingen van de EMC en laagspanningsrichtlijn.



Het symbol bevestigt dat dit product voldoet aan de bovengenoemde normen en voorschriften..

Amanda(Shu-Wen) Chen

Name (Full Name)

2017/2/3

Date

Geschäftsführerin

Title-Department

Legal Signature



Declaration of Conformity

We, the undersigned, Digital Data Communications GmbH
Address Hohe Straße 1, 44139 Dortmund, Germany

Certify and declare under our sole responsibility that the following apparatus

Type Wireless USB adapter
Brandname LevelOne
Product WUA-1810

**Conforms with the essential requirements of the EMC Directive
2014/53/EU based on the following specifications applied:**

- EN 301489-1 V2.1.1:2017-02
- EN 301489-3 V2.1.0:2016-09
- EN 301489-17 V3.1.1:2017-02
- EN 300328 V2.1.1:2016-11
- EN 60950-1:2006+A11:2009+A1:2010+A12: 2011+A2:2013
- EN 62479:2010

and therefore complies with the essential requirements and provisions of the EMC Directive.



The symbol confirms that this product conforms to the above named standards and regulations.

Amanda(Shu-Wen) Chen

Name (Full Name)

2017/2/3

Date

Geschäftsführerin

Title-Department

Legal Signature



Declaración de Conformidad

El fabricante **Digital Data Communications GmbH**
Dirección: Hohe Straße 1, 44139 Dortmund, Germany

Declara mediante este documento que el producto

Tipo Wireless USB adapter
Producto WUA-1810
Marca LevelOne

Cumple con las siguientes directivas:

- Directiva 2014/53/EU

El producto cumple asimismo con las siguientes normas:

- EN 301489-1 V2.1.1:2017-02
- EN 301489-3 V2.1.0:2016-09
- EN 301489-17 V3.1.1:2017-02
- EN 300328 V2.1.1:2016-11
- EN 60950-1:2006+A11:2009+A1:2010+A12: 2011+A2:2013
- EN 62479:2010



Este producto ha sido diseñado para su uso sólo en interiores.

La marca CE certifica que este producto se adecua a las especificaciones y regulaciones arriba mencionadas.

Este producto es adecuado para todos los países de la UE.

<u>Amanda(Shu-Wen) Chen</u>	<u>Geschäftsführerin</u>
Name (Full Name)	Title-Department
<u>2017/2/3</u>	
Date	Legal Signature



Konformitätserklärung

Der Hersteller **Digital Data Communications GmbH**
Adresse Hohe Straße 1, 44139 Dortmund, Germany

erklärt hiermit, dass das Produkt
Typ Wireless USB adapter
Produkt WUA-1810
Markenname LevelOne

den folgenden Richtlinien entspricht:

- 2014/53/EU

Für die Beurteilung der Einhaltung der Konformität angewandte Normen:

- EN 301489-1 V2.1.1:2017-02
- EN 301489-3 V2.1.0:2016-09
- EN 301489-17 V3.1.1:2017-02
- EN 300328 V2.1.1:2016-11
- EN 60950-1:2006+A11:2009+A1:2010+A12: 2011+A2:2013
- EN 62479:2010



Das Zeichen bestätigt, dass dieses Produkt oben aufgeführte Normen und Bestimmungen erfüllt.

Amanda(Shu-Wen) Chen

Name (Full Name)

2017/2/3

Date

Geschäftsführerin

Title/Department

Legal Signature



Déclaration de Conformité

Nous, les soussignés **Digital Data Communications GmbH**
Adresse Hohe Straße 1, 44139 Dortmund, Germany

Certifie et déclare sous sa seule responsabilité que le produit suivant

Type Wireless USB adapter
Produit WUA-1810
Enseigne LevelOne

En conformité avec les exigences essentielles de la directive 2014/53/EU sur la base des normes suivantes:

Les normes harmonisées d' EU

- EN 301489-1 V2.1.1:2017-02
- EN 301489-3 V2.1.0:2016-09
- EN 301489-17 V3.1.1:2017-02
- EN 300328 V2.1.1:2016-11
- EN 60950-1:2006+A11:2009+A1:2010+A12: 2011+A2:2013
- EN 62479:2010



Le symbole confirme que ce produit répond aux normes et règlements ci-dessus ..

Amanda(Shu-Wen) Chen

Name (Full Name)

2016/2/3

Date

Geschäftsführerin

Title/Department

Legal Signature



Dichiarazione di conformità

In fabbricante **Digital Data Communications GmbH**
Indirizzo Hohe Straße 1, 44139 Dortmund, Germany

Dichiara qui di seguito che il prodotto

Tipo Wireless USB adapter
Prodotto WUA-1810
Nome marca LevelOne

Risulta in conformità a quanto previsto dalle seguenti direttive comunitarie:

- 2014/53/EU

Sono stati applicati i seguenti standard per assicurarne la conformità:

- EN 301489-1 V2.1.1:2017-02
- EN 301489-3 V2.1.0:2016-09
- EN 301489-17 V3.1.1:2017-02
- EN 300328 V2.1.1:2016-11
- EN 60950-1:2006+A11:2009+A1:2010+A12: 2011+A2:2013
- EN 62479:2010



Il simbolo CE conferma che questo prodotto è conforme ai suddetti standard e regolamentazioni.

Amanda(Shu-Wen) Chen

Name (Full Name)

2017/2/3

Date

Geschäftsführerin

Title-Department

Legal Signature



Declaração de Conformidade

O fabricante **Digital Data Communications GmbH**
Morada Hohe Straße 1, 44139 Dortmund, Germany

Declara que o produto

Tipo Wireless USB adapter
Produto WUA-1810
Nome de marca LevelOne

Cumpra as seguintes directivas:

- 2014/53/EU

Os seguintes standards foram consultados para avaliar a conformidade:

- EN 301489-1 V2.1.1:2017-02
- EN 301489-3 V2.1.0:2016-09
- EN 301489-17 V3.1.1:2017-02
- EN 300328 V2.1.1:2016-11
- EN 60950-1:2006+A11:2009+A1:2010+A12: 2011+A2:2013
- EN 62479:2010



O símbolo confirma que este produto está conforme os padrões e regulamentações acima referidos.

Amanda(Shu-Wen) Chen

Name (Full Name)

2017/2/3

Date

Geschäftsführerin

Title-Department

Legal Signature