

TRENDnet®



Quick Installation Guide

TWG-431BR (V1)

Table of Contents

1 English

1. Before You Start
2. Quick Reference
3. Hardware Installation and Configuration

1. Before You Start

Package Contents

- TWG-431BR
- Quick Installation Guide
- Power adapter (12V DC, 1.5A)
- RJ-45 to RS-232 console cable (1m / 3.28 ft.)
- Rack mount kit

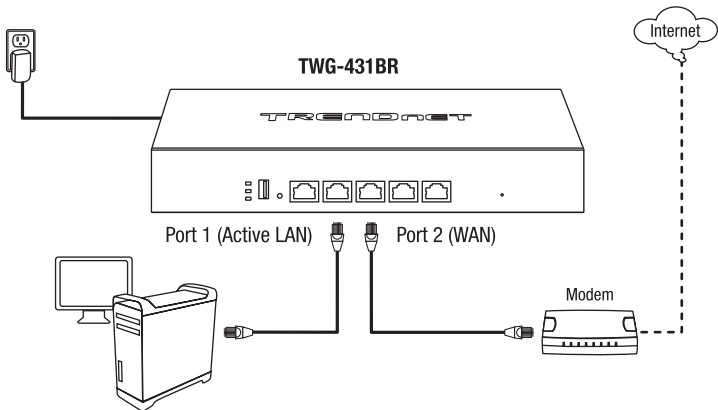
Minimum Requirements

- Computer with an Ethernet port and web browser
- Network cable

Optional Equipment

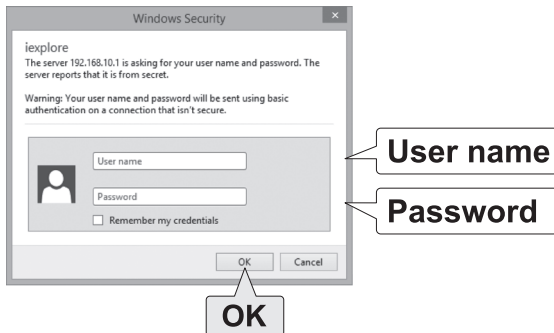
- EIA standard 19" rack

2. Quick Reference

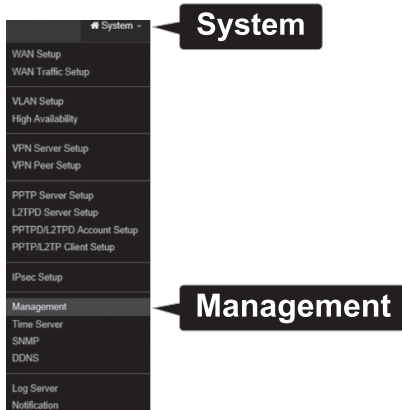


3. Hardware Installation and Configuration

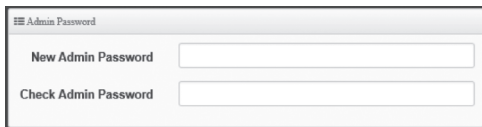
1. After you have the unit powered on and have connected your computer into the Active LAN port, open your web browser and type the IP address of the router in the address bar, then press **Enter**. The default IP address is 192.168.10.1.
2. Enter the **User name** and **Password**, and then click **OK**. By default:
User name: **admin**
Password: **admin**



3. Click **System** at the top, then click **Management**.



4. In the Admin Password section, enter and confirm your new Admin Password.



Admin Password

New Admin Password

Check Admin Password

5. Click **Save** at the bottom of the page.

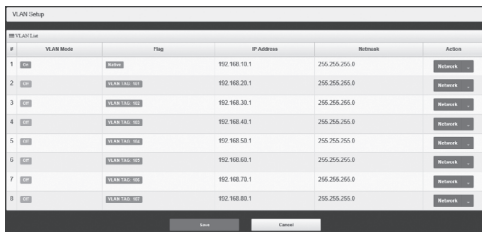
Note: After clicking **Save**, the changes you made to the router will not take effect until you reboot the unit. You can also make additional changes, then save and reboot after you have completed all configuration changes. To save all configuration changes and reboot, click **Reboot** in the top right corner then click the **Reboot** button.

Save

6. Click **System** at the top, then click **VLAN Setup**.



7. By default, VLAN #1 refers to the LAN interface and the default IP address settings of the router.



#	VLAN Mode	Flag	IP Address	Netmask	Action
1	LAN	None	192.168.10.1	255.255.255.0	Network
2	LAN	LAN 100/100	192.168.20.1	255.255.255.0	Network
3	LAN	LAN 100/100	192.168.30.1	255.255.255.0	Network
4	LAN	LAN 100/100	192.168.40.1	255.255.255.0	Network
5	LAN	LAN 100/100	192.168.50.1	255.255.255.0	Network
6	LAN	LAN 100/100	192.168.60.1	255.255.255.0	Network
7	LAN	LAN 100/100	192.168.70.1	255.255.255.0	Network
8	LAN	LAN 100/100	192.168.80.1	255.255.255.0	Network

8. Under VLAN #1 click the Network button in the action column on the right.



9. Under IP setup, configure the router IP address settings, match the requirements of your network.

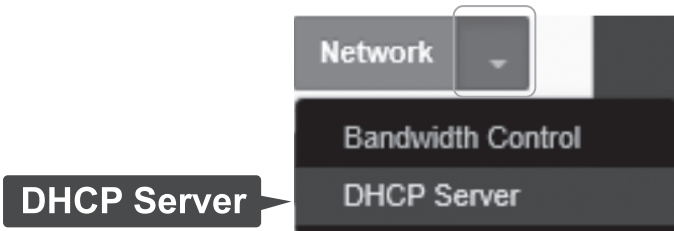


IP Setup

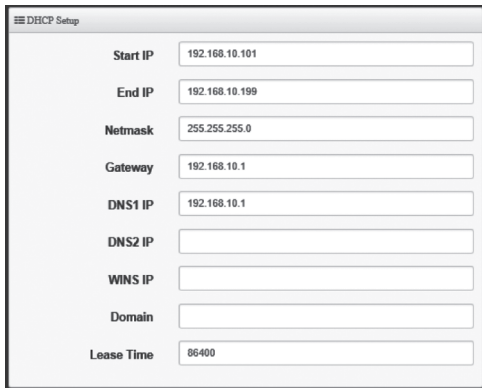
IP Address: 192.168.10.1

Netmask: 255.255.255.0

10. After you have configured the IP address settings, you need to configure the DHCP Pool to match the IP address settings. Under VLAN #1 click the arrow button in the action column on the right then select **DHCP Server**.



11. In the DHCP Setup section enter your desired IP address settings for your DHCP server.



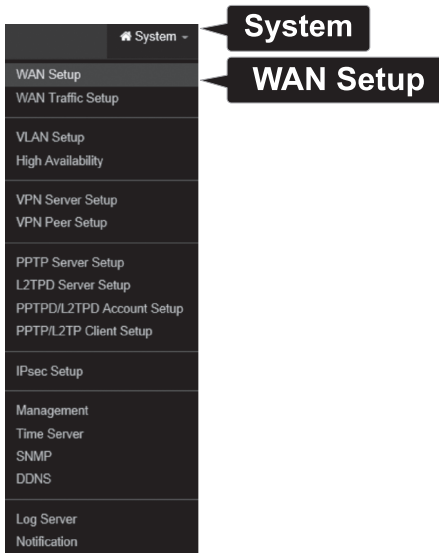
Field	Value
Start IP	192.168.10.101
End IP	192.168.10.199
Netmask	255.255.255.0
Gateway	192.168.10.1
DNS1 IP	192.168.10.1
DNS2 IP	
WINS IP	
Domain	
Lease Time	86400

12. Click **Save** at the bottom of the page.

Note: After clicking **Save**, the changes you made to the router will not take effect until you reboot the unit. You can also make additional changes, then save and reboot once you have completed all configuration changes. To save all configuration changes and reboot, click **Reboot** at the top right corner and click the **Reboot** button.

Save

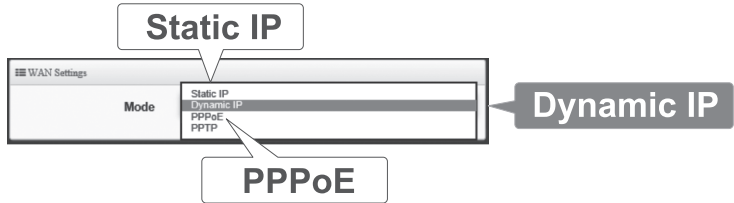
13. Click the **System** tab at the top, then click **WAN Setup**.



14. The WAN 1 interface of the Router is set to Dynamic IP (also known as DHCP) by default. To change the WAN 1 Internet connection settings, click the Edit button in the column on the right.

WAN List			
#	Active	Mode	Edit
1	<input type="checkbox"/> On	Dynamic IP	<input type="button" value="Edit"/>
2	<input type="checkbox"/> On	Dynamic IP	<input type="button" value="Edit"/>
3	<input type="checkbox"/> On	Dynamic IP	<input type="button" value="Edit"/>

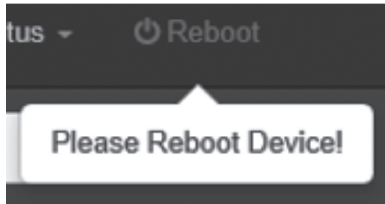
15. Under WAN settings, select the appropriate mode for your Internet connection **Dynamic IP**, **Static IP**, and **PPPoE**. If you are unsure of the connection mode, please contact your ISP.



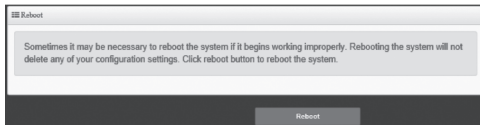
16. After you have selected the appropriate mode and entered your settings, click **Save** at the bottom of the page.

Save

17. After you save your changes, the device will prompt you to reboot in the top right corner.



18. Click **Reboot** in the top right corner, then click the **Reboot** button.



Reboot

Declaration of Conformity

TRENDnet[®]

Manufacturer's Name and Address

TRENDnet, Inc.
20675 Manhattan Place
Torrance, CA 90501 USA

Zwolsestraat 156 2587 WB
The Hague The Netherlands



Product Information:

Model Number: TWG-431BR
Product Name: Gigabit Multi-WAN VPN Business Router
Trade Name: TRENDnet

TRENDnet hereby declare that the product is in compliance with the essential requirements and other relevant provisions under our sole responsibility.

Safety EN 60950: 2006 + A11: 2009 + A1: 2010 + A12: 2011 + A2: 2013

EMC EN 55032: 2012+ AC: 2013
EN 61000-3-2: 2014
EN 61000-3-3: 2013
EN 55024: 2010
AS/NZS CISPR 32: 2013

This product is herewith confirmed to comply with the Directives.

Directives: Low Voltage Directive 2014/35/EU
EMC Directive 2014/30/EU
RoHS Directive 2011/65/EU
WEEE Directive 2012/19/EU
REACH Regulation (EC) No. 1907/2006

Person responsible for this declaration.

Place of Issue: Torrance, California, USA

Date: July 24, 2018

Name: Sonny Su

Title: Director of Technology

Signature:

A handwritten signature in black ink, appearing to read 'Sonny Su', is written over a horizontal line.



TRENDNET[®]

Certifications

This device complies with Part 15 of the FCC Rules.

Operation is subject to the following two conditions:

- (1) This device may not cause harmful interference.
- (2) This device must accept any interference received.

Including interference that may cause undesired operation.



Waste electrical and electronic products must not be disposed of with household waste. Please recycle where facilities exist. Check with your Local Authority or Retailer for recycling advice.

Applies to PoE Products Only: This product is to be connected only to PoE networks without routing to the outside plant.

Note

The Manufacturer is not responsible for any radio or TV interference caused by unauthorized modifications to this equipment. Such modifications could void the user's authority to operate the equipment.

Advertencia

En todos nuestros equipos se mencionan claramente las características del adaptador de alimentación necesario para su funcionamiento. El uso de un adaptador distinto al mencionado puede producir daños físicos y/o daños al equipo conectado. El adaptador de alimentación debe operar con voltaje y frecuencia de la energía eléctrica domiciliar existente en el país o zona de instalación.

Technical Support

If you have any questions regarding the product installation, please contact our Technical Support.

Toll free US/Canada: **1-866-845-3673**

Regional phone numbers available at www.trendnet.com/support

TRENDnet

20675 Manhattan Place
Torrance, CA 90501
USA

Product Warranty Registration

Please take a moment to register your product online. Go to TRENDnet's website at: www.trendnet.com/register