

Router

RT2600ac



Redefine your network with Synology Router RT2600ac's powerful wireless capabilities and rock-solid, security-focused Synology Router Manager core. Designed for both homes and offices, MU-MIMO support ensures more devices can connect at higher speeds while SRM's Parental Control and Traffic Control allows simple management and fine-tuning of network traffic.

Reimagine your network

Coupling performance, security, and flexibility, Synology Router RT2600ac is powered by a high speed, **dual-core 1.7GHz processor** designed to handle demanding, high bandwidth processing environments. Its **802.11ac wave 2** Wi-Fi radios features **MU-MIMO** support together with **4x4 quad stream** capability allowing up to **2.53 Gbps (800 + 1733Mbps)** wireless bandwidth. The RT2600ac can automatically maximize bandwidth usage and wireless speeds for more of your devices while at the same time retaining optimal range with Smart Connect. The **hardware accelerated Layer 7** traffic control design ensures that even with multiple devices and traffic control rules, the RT2600ac will still have plenty of processing power to keep up with your networking demands.

Revolutionary software experience

Synology Router Manager (SRM) powers Synology's networking lineup. SRM allows for friendly management of your device while not compromising on features and customization. Based on Synology's award winning DiskStation Manager (DSM) in proven DiskStation Network Attached Storage (NAS) devices, SRM is built with security and stability in mind.

SRM features Synology's friendly, **easy to use interface**. The familiar, desktop-like interface makes it easy for even beginners to manage their entire network. DSM users will feel right at home while advanced power users will find capable network tools at their disposal to quickly and efficiently setup, customize, or troubleshoot an issue.

Secure and convenient access options are built into SRM. Easily manage your network with multiple access methods locally, with "router.synology.com" and optionally,

Highlights

- 1.7GHz Dual-core processor for fast, uncompromising performance
- Powerful 4x4 802.11ac wave 2 radios with MU-MIMO and up to 2.53Gbps breakthrough wireless speeds
- Smart Connect for seamless transition between maximum speed or range
- Hardware accelerated Layer 7 traffic control and monitoring
- Dual WAN capable for load balancing and failover support
- Create advanced VPNs with WebVPN, Synology SSL VPN, and SSTP VPN capability¹
- Powerful add-on packages to enhance security, file sharing, and additional functionality
- Revolutionary interface, powered by Synology Router Manager (SRM)

remotely with **QuickConnect**, DDNS, or with DS router on mobile devices. Optional two-step authentication ensures that no one but you can make changes to your network.

Advanced VPN capabilities

With the optional **VPN Plus Server¹** add-on package, you can transform your Synology Router RT2600ac into a powerful yet intuitive comprehensive VPN solution. **WebVPN** and **Synology SSL VPN** allow for minimal client setup and configuration to access your network. VPN Plus Server also supports hosting standard **SSTP**, **PPTP**, **OpenVPN**, and **L2TP over IPSec** VPN options.

WebVPN allows client-free VPN for secured, remote access to internal websites using only a browser without any software installation or configuration required on clients.

Synology SSL VPN is available with dedicated clients on both desktop and mobile platforms for improved performance and integration with Layer 7 traffic control.

Solid network foundation

Synology Router RT2600ac features advanced security features that help make your network more resilient against network intrusions. Featuring a simple to use Security Advisor and comprehensive website filtering capabilities, SRM is also constantly tested against industry leading **Qualys Vulnerability Management** suite to ensure compliance against known security threats. In addition to SRM's solid networking infrastructure and built in IPv4 and IPv6 firewalls, with the Intrusion Prevention package, RT2600ac will help prevent malicious attackers from being able to infiltrate and compromise your devices.

Featuring constantly updated intrusion detection system (IDS) and intrusion prevention system (IPS), **Intrusion Prevention** add-on package is a powerful additional layer of security that you can easily and effortlessly configure on your Synology device free of charge.

SRM's built-in Security Advisor will analyze and remind you of security issues in your configuration, allowing you a clear and easy way to optimize your settings without requiring thorough networking knowledge.

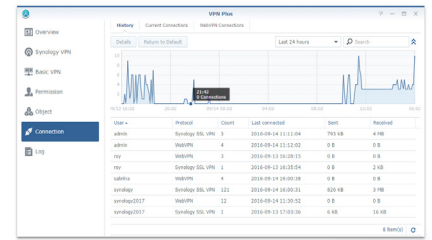
RT2600ac is also capable of **Dual WAN load balancing plus failover** support. Coupled with a different ISP, you can ensure reliable internet connectivity should one provider or cable fail.

Fine-grained network management

Easily manage clients connected to the RT2600ac by setting up internet access schedules and allowed/restricted websites for each device. The powerful, constantly updated database of websites allow for smart, customized filters to be applied per-device to prevent access or protection from, up to 20 different types of websites.

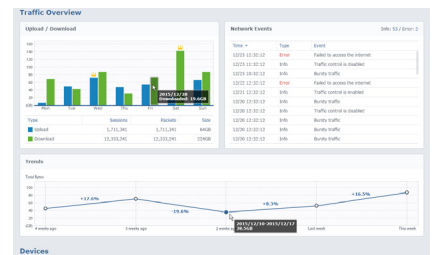
SRM features **deep packet inspection (DPI)** capability, allowing for application based monitoring on your network. One step beyond traditional QoS methods, SRM allows you to define which applications you want prioritized in addition to fixed and/or dynamic guaranteed bandwidth allocation per device. This powerful per-device flexibility can continuously be fine tuned on thanks to **detailed usage reports** that SRM can generate for you. Easily see what are the most common websites viewed, applications used, in addition to per-device usage statistics.

The RT2600ac's new **Layer 7 hardware acceleration engine** allows minimal performance and throughput drop even with advanced traffic control and monitoring enabled.



VPN Plus

Complete VPN solution supporting client-free WebVPN, powerful and secure Synology SSL VPN in addition to standard VPN protocols and powerful management tools



Traffic control and reporting

Monitor and fine-tune your network to perfection based on detailed reports generated by SRM

Comprehensive file sharing, management, and connectivity

Synology's expertise in creating consumer and enterprise-grade network attached storages (NAS) has profoundly influenced Synology Router Manager (SRM). Comprehensive sharing capabilities together with add-on package **Cloud Station Server** allow you to create your personal cloud storage with ease. Easily backup, share, and sync your files with the RT2600ac from multiple devices. Coupled with a capable **Media Server** package, your Synology router can serve as a media server to any DLNA certified smart television set, networked set-top-box, or the latest gaming consoles.

Featuring two USB ports, Synology Router RT2600ac also features a convenient, front-access SD card slot. Easily transfer files with both USB devices and the SD card slot in between themselves or with another client on the network. Synology routers also support **Time Machine** backup with an attached storage device.

Evolving Software and Platform

SRM and its ecosystem is constantly growing. Synology is dedicated to providing not just security updates but new features with core software improvements, additional add-on packages, and new supporting mobile applications. Stay up to date with our improvements on our website and via our newsletters!

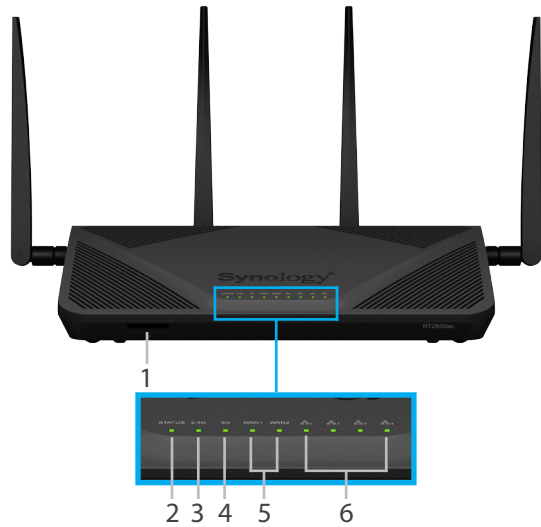


Cloud Station

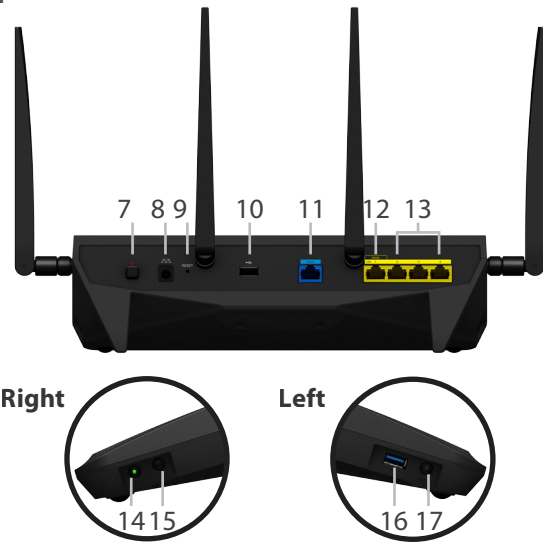
Easily create your own private cloud using the powerful Cloud Station suite on your devices

Hardware Overview

Front



Rear



1	SD card slot	2	Status indicator	3	2.4 GHz indicator	4	5 GHz indicator
5	WAN indicator	6	LAN indicator	7	Power button	8	Power port
9	Reset button	10	USB 2.0 port	11	WAN port	12	WAN/LAN port
13	LAN port	14	WPS button	15	Wi-Fi button	16	USB 3.0 port
17	Eject button						

Technical Specifications

Hardware

CPU	Dual-core 1.7GHz
Hardware L7 Engine	Yes
Memory	DDR3 512MB
Antenna type	4T4R Omnidirectional high-gain dipole (2.4 GHz / 5 GHz)
Antenna gain	2.4 GHz: 4.5dBi max, 5 GHz: 3.6dBi max
LAN Port	<ul style="list-style-type: none"> 4 x Gigabit 3 x Gigabit (Dual WAN mode)
WAN Port	<ul style="list-style-type: none"> 1 x Gigabit 2 x Gigabit (Dual WAN mode)
External port	<ul style="list-style-type: none"> USB 3.0 USB 2.0 SD card slot
Size (HxWxD)	77 x 280 x 169 mm (without antenna)
AC input power voltage	100V to 240V AC
Power frequency	50 to 60Hz, single phase
Operating temperature	5°C to 40°C (40°F - 104°F)
Storage temperature	-20°C to 60°C (-5°F to 140°F)
Relative humidity	5% to 95% RH
Maximum operating altitude	5,000 m (16,400 ft)

Wireless

Wireless standards	802.11a/n/ac 5 GHz, 802.11b/g/n 2.4 GHz, simultaneous dual-band
Frequency and data rate	<ul style="list-style-type: none"> 2.4 GHz: 800 Mbps 5 GHz: 1733 Mbps
Wireless security	WEP, WPA/WPA2-Personal, WPA/WPA2-Enterprise, Wi-Fi Protected Setup (WPS) 2.0
Other wireless functions	Smart Connect - 2.4 GHz and 5 GHz automatic band steering, Independent 2.4 GHz/5 GHz Wi-Fi schedule On / Off, Guest Network

Features

Operation Modes	<ul style="list-style-type: none">• Wireless router• Wireless AP
DHCP	Server, client, client list, address reservation
Quality of Service	Application Layer (Layer 7) monitoring and management
Port forwarding	DMZ, UPnP
Parental control	Per-device customizable Internet schedule, allow/block list, DNS-based web filter with built-in database, Google SafeSearch™
Traffic control	Per-device Internet ban, custom speed, traffic monitoring and advanced usage reporting
Network tools	Ping, Traceroute, Wake on LAN over QuickConnect
Security	IPv4, IPv6 Firewall / SPI firewall, MAC address filter, denial of service (DoS) protection, auto block, server certificate, Security Advisor, VPN pass-through (PPTP, IPSec, L2TP)
VPN client	PPTP, OpenVPN™, L2TP over IPSec
IPv6 support	IPv6 DHCP server / client, IPv6 tunneling
Backup solutions	Backup & restore SRM configuration, Time Machine support (with attached USB storage device)
Notifications	Email, SMS, push notifications (via DS router)
File Service	CIFS, AFP, FTP, WebDAV
FTP server	Bandwidth control for TCP connections, custom FTP passive port range, anonymous FTP, FTP SSL/TLS and SFTP protocols, transfer logs
iOS/ Android™ applications	DS cloud, DS file, DS get, DS router
Anywhere access	Synology QuickConnect, Dynamic DNS (DDNS)
Printer support	Maximum printer: 1, printing protocols: LPR, CIFS, IPP
Advanced functions	Smart WAN - Dual WAN load balancing and failover, policy route, static route, network address translation (NAT), SNMP, SSH, LAN/WLAN IGMP snooping, PPPoE relay
Supported clients	Windows 7 onward, Mac OS X® 10.10 onward
Supported browsers	Chrome®, Firefox®, Internet Explorer® 9 onwards, Safari® 8 onwards; Safari (iOS 7 onwards), Chrome (Android™ 4.0 onwards) on tablets
Language	English, Deutsch, Français, Italiano, Español, Dansk, Norsk, Svensk, Nederlands, Русский, Polski, Magyar, Português do Brasil, Português Europeu, Türkçe, Český, 日本語, 한국어, 繁體中文, 简体中文

Add-on Packages

VPN Plus Server ¹	Turn your Synology Router into a powerful VPN server. Allows secure VPN access through a web browser or client. Supports various VPN services — WebVPN, Synology SSL VPN, SSTP, OpenVPN, L2TP over IPSec, and PPTP. With multiple management tools, allows network administrators to regulate and monitor VPN traffic
Intrusion Prevention	Greatly enhance the security of your router with IDS and IPS systems, designed to safeguard your network against internet threats
Cloud Station Server	Sync data from multiple platforms, centralizing it on the router while easily keeping historical versions of important files
RADIUS Server	Provides centralized authentication, authorization, and accounting for wireless network access
DNS Server	Help users to find, or translate domain names into IP addresses
Download Station	Supported download protocols: BT/HTTP/FTP/NZB/eMule, maximum concurrent download task: 50
Media Server (DLNA/UPnP®)	Provide multimedia streaming service to DLNA certified devices and PS3® / PS4® / Xbox 360® / Xbox One® consoles

Certifications and Packaging

Standards	RoHS compliant; Wi-Fi Certified; DLNA Certified; Compliant with CE, FCC, NCC, RCM standards
Package content	<ul style="list-style-type: none">• RT2600ac main unit• 4 x Antenna• AC power adapter• RJ-45 LAN cable• Quick Installation Guide
Warranty	2 years

*Model specifications are subject to change without notice. Please refer to www.synology.com for the latest information.

1. VPN Plus WebVPN, Synology SSL VPN, and SSTP functions include one free account. Licenses are required for additional users.

SYNOLOGY INC.

Synology is dedicated to taking full advantage of the latest technologies to bring businesses and home users reliable and affordable ways to centralize data storage, simplify data backup, share and sync files across different platforms, and access data on-the-go. Synology aims to deliver products with forward-thinking features and the best in class customer services.

Copyright © 2016, Synology Inc. All rights reserved. Synology, the Synology logo are trademarks or registered trademarks of Synology Inc. Other product and company names mentioned herein may be trademarks of their respective companies. Synology may make changes to specification and product descriptions at anytime, without notice.

RT2600ac-2016-ENU-REV001

Headquarters

Synology Inc. 3F-3, No. 106, Chang An W. Rd., Taipei, Taiwan Tel: +886 2 2552 1814 Fax: +886 2 2552 1824

China

Synology Shanghai
20070, Room 516, No. 638,
Hengfeng Rd., Zhabei Dist.,
Shanghai, China

France

Synology France SARL
39 rue Louis Blanc, 92400
Courbevoie, France
Tel: +33 147 176288

North & South America

Synology America Corp.
3535 Factoria Blvd SE #200,
Bellevue, WA 98006, USA
Tel: +1 425 818 1587

United Kingdom

Synology UK Ltd.
Unit C, Denbigh West
Business Park, Third Avenue,
Bletchley, Milton Keynes,
MK1 1DH, UK
Tel: +44 1908 366380

Germany

Synology GmbH
Grafenberger Allee
125 40237 Düsseldorf
Deutschland
Tel: +49 211 9666 9666