

GEL-2681 Version: 1



TURING 26-Port L3 Lite Managed Gigabit Switch, 2 x SFP/RJ45 Combo

GEL-2681 L3 Lite Managed Gigabit Switch is a next-generation Ethernet Switch offering full suite of L2 features, including advanced L3 features such as Static Route that delivers better cost performance and lower total cost of ownership in Enterprise networks via fiber or copper connections. GEL-2681 provides high HW performance and environment flexibility for SMBs/ Enterprises. GEL-2681 is ideal to deliver management simplicity, optimum user experience, and lower total cost of ownership. The embedded Device Managed System is designed to be extremely easy-to-use/manage/install IP Phone, IP Cam, or Wifi-AP for Enterprise Applications.

Key Features

- 24 Gigabit ports and 2 Gigabit RJ45/SFP combo ports
- QoS control for traffic prioritization and bandwidth management
- DHCP Client/Server
- Supports IPv4/IPv6 network operation
- Minimize carbon footprint with advanced energy efficient technology (IEEE 802.3az)
- IEEE 802.3ad LACP for auto port aggregation
- Supports VLAN (Port-based, Protocol-based, Private, Q-in-Q, Tag-based) and GVRP
- IEEE 802.1d/w/s Spanning Tree Protocol (STP) and port mirroring
- IP Multicast Filtering through IGMP Snooping V1 / V2 / V3

Specifications

System Specifications

Standards & Protocols:

IEEE 802.3 10-BASE-T, Ethernet
 IEEE 802.3u 100-BASE-TX, Fast Ethernet
 IEEE 802.3ab 1000BASE-T, Gigabit Ethernet
 IEEE 802.3z 1000BASE-X, Gigabit Ethernet
 IEEE 802.1p Quality of Service (QoS)
 IEEE 802.1X Port-based Network Access Control (PNAC)
 IEEE 802.1Q Virtual LANs (VLANs)
 IEEE 802.1D MAC Bridges
 IEEE 802.1d Standard Spanning Tree Protocol
 IEEE 802.1s Multiple Spanning Tree (MSTP)
 IEEE 802.1w Rapid Spanning Tree Protocol (RSTP)
 IEEE 802.3x Flow Control
 IEEE 802.3ad Link Aggregation Control Protocol (LACP)
 IEEE 802.3az Energy-Efficient Ethernet
 Link Layer Discovery Protocol (LLDP)

**Memory:**

RAM : 128 MB

Flash : 32 MB

Buffer Memory:

512 KB

Port:

24 x 10/100/1000Mbps RJ45 port,

2 x Gigabit RJ45/SFP combo port

1 x RJ45 Console port

Button/Knob:

Mode / Reset Button

Indicator:

System, Link/Act/Speed

Transmission Method:

Store-and-Forward

Power Input:

100-240 VAC 50~60Hz

Power Consumption:

16.79 W

Backplane (Gbps):

52Gbps

MAC Address Table:

8K

Data Rate:

10/100/1000Mbps

Features

General:

Device Management System (DMS)

IGMP: IGMP v1/v2/v3 snooping, IGMP Queried, IGMP Proxy

Virtual Local Area Network (VLAN):

Port-based VLAN

802.1Q tag-based VLAN

MAC-based VLAN

Management VLAN

Private VLAN Edge (PVE)

Q-in-Q (double tag) VLAN

Voice VLAN

GARP VLAN Registration Protocol (GVRP)

DHCP: DHCP Client

Security:

ACLs:L2/L3/L4

ACLs:IPv6 Support

Port Security (MAC-based)

IP Source Guard

Storm Control

RADIUS Authentication 802.1x

TACACS+ Authentication

HTTPs and SSL (Secured Web)

BPDU Guard

STP Root Guard

DHCP Snooping

Loop Protection

Management:

Switch Management:

DHCP:Client,Relay,Option 66,Option 67,Option 82
Event/Error Log:Syslog,SMTP (RFC821)
Management Access Filtering:SNMP,Web,Telnet,SSH
RMON (1,2,3 & 9 Groups)
Software Upgrade
Configuration Export/Import
Port Mirroring
LLDP (IEEE802.1AB)
LLDP-MED (IEEE802.1AB)
CDP Aware
sFlow
IPv6 Management
NTP

L3:

IPv4/IPv6 L3 static route

Ease of Use:

Firmware and Configuration: Upgrade via HTTP

Performance

Packet Forwarding Rate:

38.68 Mpps

Jumbo Frame (K):

9.6K

Switching Capacity:

52 Gbps

Environment

Power Saving:

IEEE 802.3az Energy Efficient Ethernet:

- Automatically turns power off on RJ-45 port when detecting link down or Idle of client
- Cable length detection: Adjusts the signal strength based on the cable length
- Reduces the power consumption for cables shorter

Heat Dissipation:

full loading: 73.87 BTU/hr

Operating Temperature (°C):

Operating: 0°C ~ 45°C

Storage: -20°C ~ 70°C

Operating Humidity (Non-condensing):

Storage: 10% ~ 90%

Operating: 10 ~ 90%

Physical Specifications

Dimensions (W x D x H mm):

442 x 211x 44 mm

Weight (g):

2600g

Reliability



MTBF:
25°C?463,931(hr)
40°C?305,837(hr)

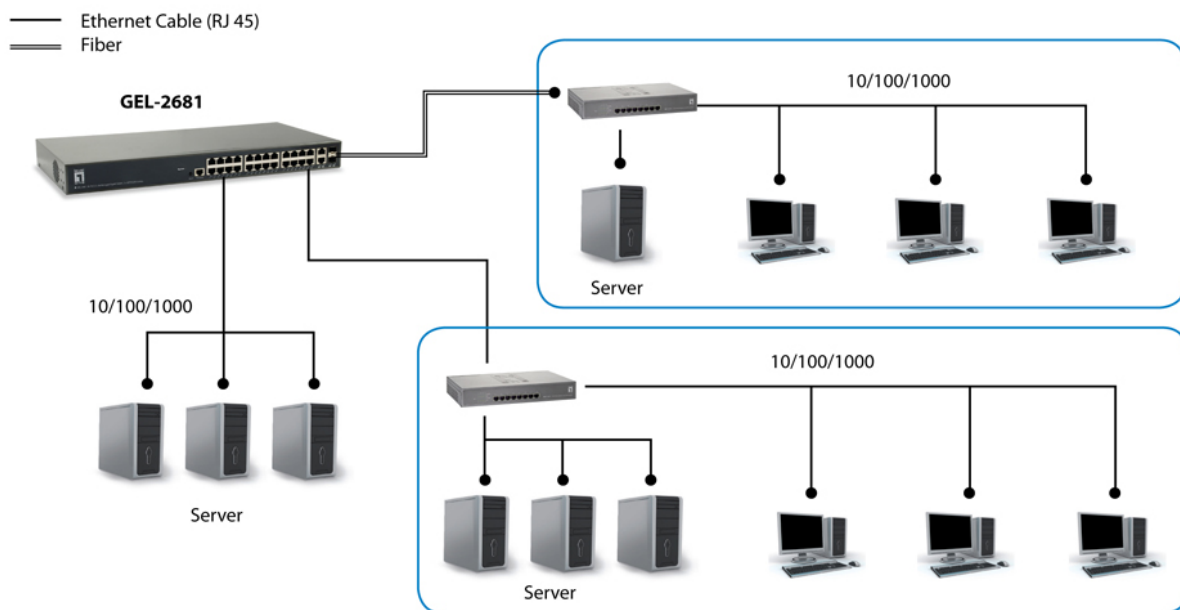
Approval and Compliance

EMI/EMS:
CE, FCC Part 15 Class A, VCCI

Safety:
LVD

Environmental Test:
RoHS

Diagram



Order Information

GEL-2681

Package Contents

GEL-2681
Power Cord
Console Cable
Resource CD (User Manual, QIG)
Quick Installation Guide
19" Rack Mount Kit

No liability or responsibility for any errors or omissions in the content.
Specifications are subject to change without notice.
All mentioned brand names are registered trademarks and property of their owners.
Copyright © Digital Data Communications GmbH, Germany. All Rights Reserved.