



## 50-Port Fast Ethernet Switch, 2 x Gigabit SFP/RJ45 Combo

Fast connections and fiber distancesFGU-5021 is a 48-port Fast Ethernet Switch (10/100 Mbps) that gives you a l

Plug and Play, Flexible and EasyGSW-5150 is plug-and-play so no configuration is required. Providing auto MDI/MDI-X cable detection on all ports eliminates the need for crossover cables or Uplink ports. Each port can be used as general ports or Uplink ports, and any port can be simply plugged into a server, a hub, a router or a switch, using a straight cable or crossover cable. Diagnostic LEDs which display link status and activity, allowing you to quickly detect and correct problems on the network.

### Key Features

- 10/100Mbps, full/half-duplex, auto-negotiation, auto-MDI/MDIX
- 9K jumbo frames to increase data transfer rates
- Supports 8K MAC address auto-learning and auto-aging
- 19-inch metal housing
- Quick and easy installation

### Specifications

#### System Specifications

##### Standards & Protocols:

IEEE802.3(10BASE-T)

IEEE802.3u(100BASE-T)

IEEE802.3az Energy Efficient Ethernet

##### Memory:

16Mbit

##### Buffer Memory:

4Mbit

##### Connectors and Cabling:

48 x 10/100BASE-TX RJ45 ports

2 x 100/1000/1000Base-X SFP Slots

2 x 100/1000/1000Base-T RJ45 ports

##### Indicator:

Power, LINK/ACT,1000M



**Transmission Method:**

Store- forward

**Power Input:**

100-240V/AC?50-60Hz

**Power Consumption:**

28.6W

### Performance

**Backplane (Gbps):**

13.6Gbps

**MAC Address Table:**

8K

**Packet Forwarding Rate:**

148800pps

**Jumbo Frame (K):**

9KB

### Environment

**Power Saving:**

Yes

**Temperature (°C):**

Operating: 0°C ~ 40°C

Storage: -40°C ~ 70°C

**Humidity (Non-condensing):**

Operate:10-90% non-condensing

Storage:5-90% non-condensing

### Physical Specifications

**Dimensions (W x D x H mm):**

440\*230\*44

**Weight (g):**

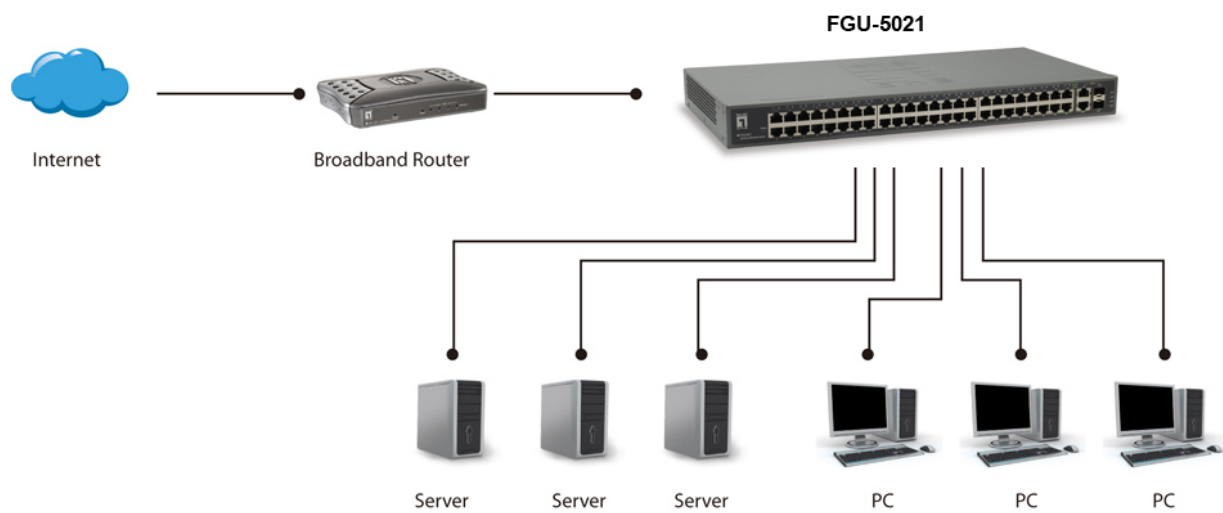
3.03

### Approval and Compliance

**EMI/EMS:**

CE/FCC

## Diagram



---

## Order Information

FGU-5021

---

## Package Contents

FGU-5021  
Power Cord  
19" Rack Mount Kit  
Quick Installation Guide

No liability or responsibility for any errors or omissions in the content.  
Specifications are subject to change without notice.  
All mentioned brand names are registered trademarks and property of their owners.  
Copyright © Digital Data Communications GmbH, Germany. All Rights Reserved.