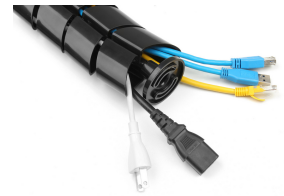


650861 Double-Channel Cable Management Spine, Black

Product Images





Short Description

1. Double-Channel Cable Management Spine
2. Cable Organizer & Hider: keep cables concealed and protect cables from the wear and tear
3. Double-channel cable system enabling the separation of cords when required by code
4. Modular Vertebrae Structure: allows users to add or subtract individual vertebra as required
5. Weighted Base with Iron Block: offers extra stability
6. Easy Setup: tools-free assembly in minutes, no expert installation required

Description

The Equip Double-channel cable management refers to a system or device designed to organize and route cables effectively, utilizing two separate channels for cable placement. It is commonly used in various settings, such as offices, data centers, entertainment centers, and home setups, to maintain a neat and organized appearance while reducing cable clutter and potential hazards.

The primary purpose of double-channel cable management is to separate and route different types of cables, such as power cords, Ethernet cables, HDMI cables, and audio/video cables, to prevent them from tangling or getting mixed up. By utilizing two channels, one can segregate cables based on their type or function, making it easier to identify and trace specific cables when needed.

Additional Information

Approval and compliance	RoHS, REACH
Product weight (kg)	0.61
Color	Black
EAN	4015867231722
Model Number	650861
Package Contents	650861
Dimensions (W x D x H)	730 x 126 x 63 mm

