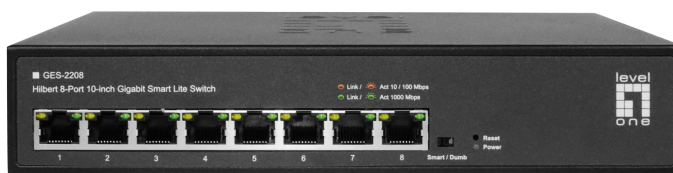


GES-2208 Hilbert 8-Port 10-inch Gigabit Smart Lite Switch

Product Images



Short Description

- 8 Gigabit Ethernet ports
- 1000Mbps full-duplex, 10/100Mbps full/half-duplex, auto-negotiation, auto-MDI/MDIX
- Supports 4K MAC address auto-learning and auto-aging
- 9K jumbo frames to increase data transfer rates
- IP Multicast Filtering through IGMP Snooping V1 / V2
- 802.1Q tag-based VLAN allows network segmentation to enhance performance and security
- IEEE 802.1p QoS with 4 priority queues
- Supports unknown unicast / broadcast / multicast storm control
- Minimize carbon footprint with advanced energy efficient technology (IEEE 802.3az)
- 4KV surge protection, 6KV contact / 8KV air ESD protection
- Support Dumb and Web Smart two mode by dip switches
- Web-based and smart lite Management

- Supports LevelOne IP Locator for easier IP management.

Description

If you're in search of a networking solution that fits your 10-inch rack/enclosure, the LevelOne GES-2208 Hilbert gigabit smart lite switch is an excellent option. This next-generation Ethernet switch delivers better functionality and usability, making it cost-effective for businesses and organizations.

The switch offers 8 (10M/100M/1G) RJ45 ports and is compatible with the latest LevelOne IP Locator, the easiest-to-use switch discovery tool, which can search all Hilbert series switches and instantly know forgotten IP and other info. Additionally, it's compatible with mainstream Windows and Mac operating systems.

With both dumb and smart Switchable usage modes, the switch is easily configurable using a DIP switch. It provides high-speed connectivity for all your devices, with 8 Gigabit ports. The support for 802.1q VLAN allows you to segment your network for enhanced security and performance.

The switch supports Port Mirroring, which allows you to monitor network traffic in real-time. Additionally, with Port-Based/802.1p/DSCP priority QoS and support for Storm Control, you can prioritize network traffic correctly and ensure that your network remains secure.

The advanced features like Loop Detection/Prevention make sure your network is always safe and reliable. Moreover, the web-based user interface and Smart-Configuration Utility make IP configuration a breeze. Upgrade your networking today with this powerful switch, and enjoy the ultimate performance, security, and ease of use.

Additional Information

Color	Black
EAN	4015867229972
Model Number	GES-2208
Features	L2 Switching Features ● IGMP Snooping ● Link Aggregation (Supports static link aggregation) ● Port Mirroring ● Cable Test VLAN ● Supports up to 32 VLANs (out of 4K VLAN IDs) ● MTU/Port/802.1Q VLAN Quality of Service (QoS) ● Support Port-based/802.1p/DSCP priority ● Support 4 priority queues ● Rate Limit ● Storm Control
Management	● Web-based Graphic User Interface (GUI) ● Supports LevelOne IP Locator for easier IP management.
Grade	Commercial
Data rate	Gigabit Ethernet
PoE Supported	No
Manageable	Yes
Fanless	Yes
Series	HILBERT series
Embedded system	SoC

Approval and Compliance	● CE ● UKCA ● FCC Part 15, Subpart B Class B ● RoHS
Operating humidity	10% RH ~ 90% RH
Operating temperature	0°C ~ 45°C
Storage humidity	5% RH ~ 95% RH
Storage temperature	-40°C ~ 70°C
Package Contents	● GES-2208 ● Power Cord ● 10" Rack Mount Kit ● Quick Installation Guide ● Declaration of Conformity
Switching capacity	16 Gbps
Product weight (kg)	0.72
Dimensions (W x D x H)	215 x 150 x 44.5 mm
Power consumption	6 W
MTBF	43,800 hrs
Packet forwarding rate	11.904 Mpps
Heat dissipation	20.4 (Btu/H)
Standards	● IEEE 802.3 10-BASE-T (Ethernet) ● IEEE 802.3u 100-BASE-TX (Fast Ethernet) ● IEEE 802.3ab 1000BASE-T (Gigabit Ethernet) ● IEEE 802.3z 1000BASE-X (Gigabit Ethernet) ● IEEE 802.3x Flow Control (full-duplex flow control) ● IEEE 802.3az: Energy Efficient Ethernet ● IEEE 802.1q VLANs/VLAN tagging ● IEEE 802.1p QoS
Power supply	100-240 VAC, 50-60 Hz
Acoustic noise (dB)	0 dB (A)
Mount	Desk mount, 10" rack mount
Flash memory size	2 MB
MAC address table	4 K
Jumbo frame (KB)	9 KB
Indicators	Power, Link/Act
Dip switch	WEB Management (Enable/Disable)
Packet buffer	1.5 Mbits

