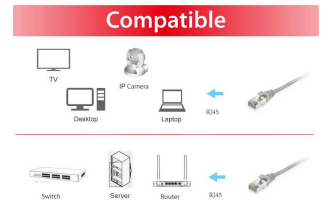
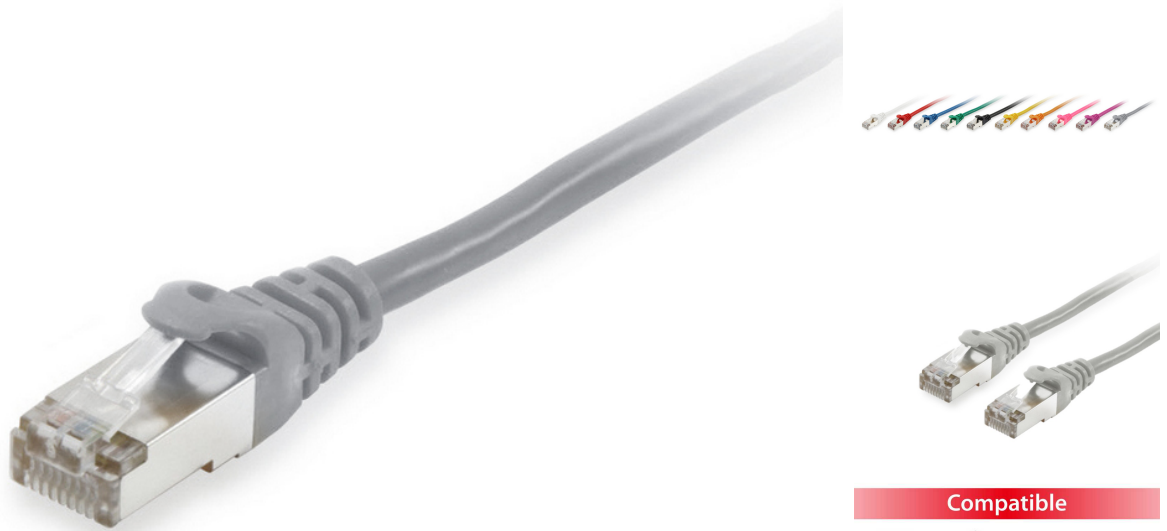


606706 Cat.6A S/FTP Patch Cable, Grey, 5.0m

Product Images





Cable ID: Cat.6A S/FTP LSOH -20M

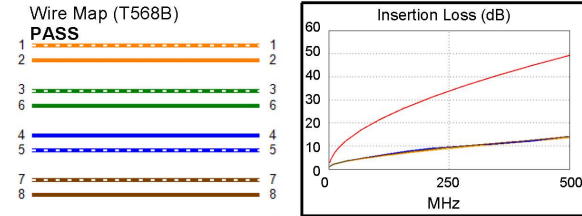
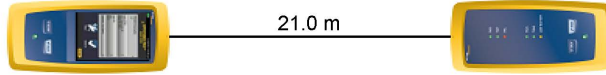
Date / Time: 04/19/2023 10:57:28 AM
 Headroom 7.7 dB (NEXT 4,5-7,8)
 Test Limit: TIA Cat 6A Channel
 Cable Type: Cat 6A S/FTP
 NVP: 77.0%

Software Version: V6.6 Build 2
 Limits Version: V7.6
 Calibration Start Date:
 Main (Module): 09/26/2022
 Remote (Module): 09/26/2022

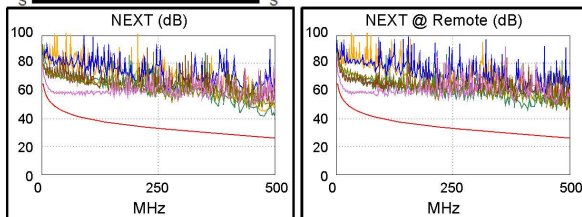
Test Summary: PASS

Model: DSX-8000
 Main S/N: 1830072
 Remote S/N: 1830152
 Main Adapter: DSX-CHA804
 Remote Adapter: DSX-CHA804

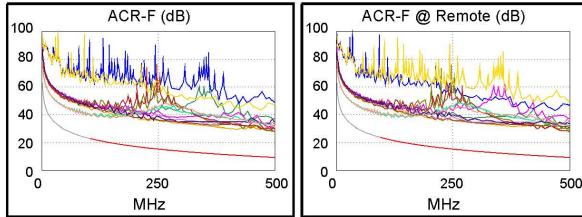
Length (m), Limit 100.0	[Pair 7,8]	21.0
Prop. Delay (ns), Limit 555	[Pair 4,5]	93
Delay Skew (ns), Limit 50	[Pair 4,5]	2
Resistance (ohms)	[Pair 3,6]	9.07
Insertion Loss Margin (dB)	[Pair 4,5]	35.1
Frequency (MHz)	[Pair 4,5]	500.0
Limit (dB)	[Pair 4,5]	49.3



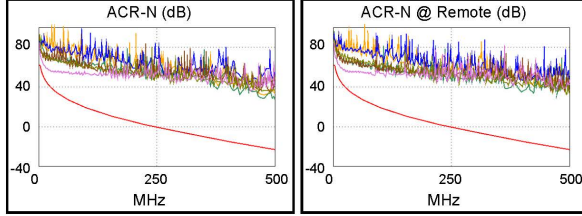
	Worst Case Margin		Worst Case Value	
PASS	MAIN	SR	MAIN	SR
Worst Pair	4,5-7,8	4,5-7,8	1,2-4,5	1,2-4,5
NEXT (dB)	7.7	8.1	14.6	17.8
Freq. (MHz)	15.0	15.0	471.0	423.0
Limit (dB)	53.7	53.7	26.8	28.1
Worst Pair	4,5	4,5	1,2	4,5
PS NEXT (dB)	9.4	9.8	16.2	20.5
Freq. (MHz)	9.5	14.4	471.0	473.0
Limit (dB)	54.4	51.4	23.9	23.9



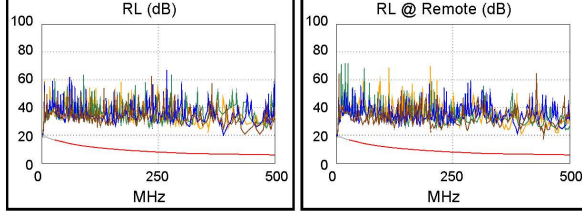
PASS	MAIN	SR	MAIN	SR
Worst Pair	7,8-4,5	4,5-7,8	3,6-4,5	1,2-3,6
ACR-F (dB)	15.4	15.5	18.8	18.5
Freq. (MHz)	72.5	72.5	499.0	498.0
Limit (dB)	26.1	26.1	9.3	9.3
Worst Pair	4,5	4,5	3,6	3,6
PS ACR-F (dB)	16.3	16.2	18.8	18.1
Freq. (MHz)	1.0	1.0	471.0	499.0
Limit (dB)	60.3	60.3	6.8	6.3



N/A	MAIN	SR	MAIN	SR
Worst Pair	4,5-7,8	4,5-7,8	1,2-4,5	3,6-7,8
ACR-N (dB)	10.9	10.9	50.7	55.1
Freq. (MHz)	3.6	3.0	500.0	493.0
Limit (dB)	59.8	61.4	-23.2	-22.7
Worst Pair	4,5	4,5	1,2	4,5
PS ACR-N (dB)	12.1	13.0	50.8	54.9
Freq. (MHz)	3.5	3.4	471.0	473.0
Limit (dB)	57.6	57.9	-23.8	-24.0



PASS	MAIN	SR	MAIN	SR
Worst Pair	4,5	7,8	4,5	7,8
RL (dB)	14.0	13.1	14.2	14.3
Freq. (MHz)	49.5	57.0	389.0	445.0
Limit (dB)	15.1	14.4	6.1	6.0



Compliant Network Standards:
 10BASE-T 100BASE-TX 100BASE-T4
 1000BASE-T 2.5GBASE-T 5GBASE-T
 10GBASE-T ATM-25 ATM-51
 ATM-155 100VG-AnyLan TR-4
 TR-16 Active TR-16 Passive

Short Description

- 4 x 2 AWG 26/7

2. 500MHz performance Bandwidth
3. Transmission: 10Gbit
4. Suitable for PoE, PoE+
5. Stranded bare copper conductor
6. Foil and braid shield Reduces EMI/RFI interference
7. PIMF (Pairs in metal Foil)
8. Molded boot with Strain relief
9. RoHS compliant
10. Low Smoke Zero Halogen (LSZH/LSOH)
11. Compliant with ISO/IEC 11801 and EN 50173

Description

The equip® Cat.6A S/FTP Patch Cord is composed of preeminent materials and fully-examined to conform with industrial standards. Offering higher bandwidth and better signal-to-noise margin, the Cat.6A cable is able to deliver ultrahigh and error-free performance in the most demanding network environments, specially for 10G application

Additional Information

Approval and compliance	RoHS
Conductor material	Copper
Conductor size (AWG)	26AWG
Jacket material	LSZH
Category	Cat.6A
Flat cable	No
Shielded	Yes
Product weight (kg)	0.163
Cable length	5m
Color	Grey
EAN	4015867229637
Model Number	606706
Package contents	606706
Cable Length	5.0m
Shielding	S/FTP
Connector 1	RJ45 male
Connector 2	RJ45 male
Dimensions (W x D x H)	8.34 x 11.68 x 5000 mm

