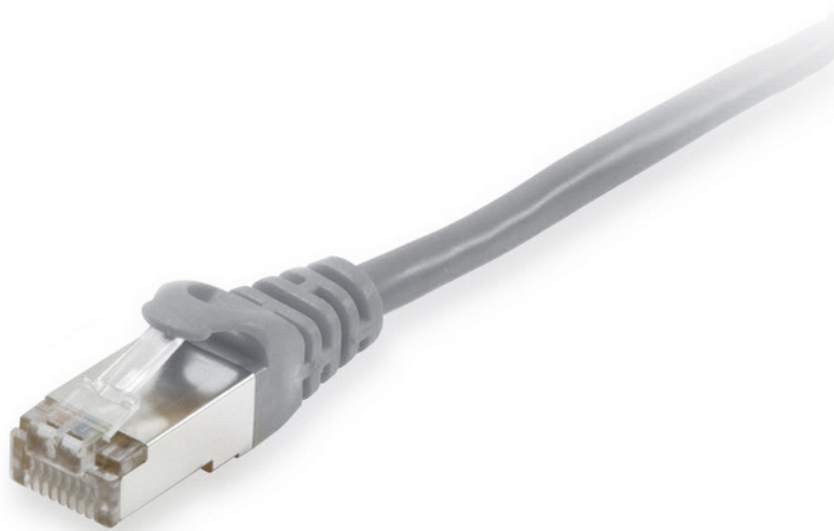


# 606707 Cat.6A S/FTP Patch Cable, Grey, 7.5m

## Product Images



### Compatible





**Cable ID: Cat.6A S/FTP LSOH -20M**

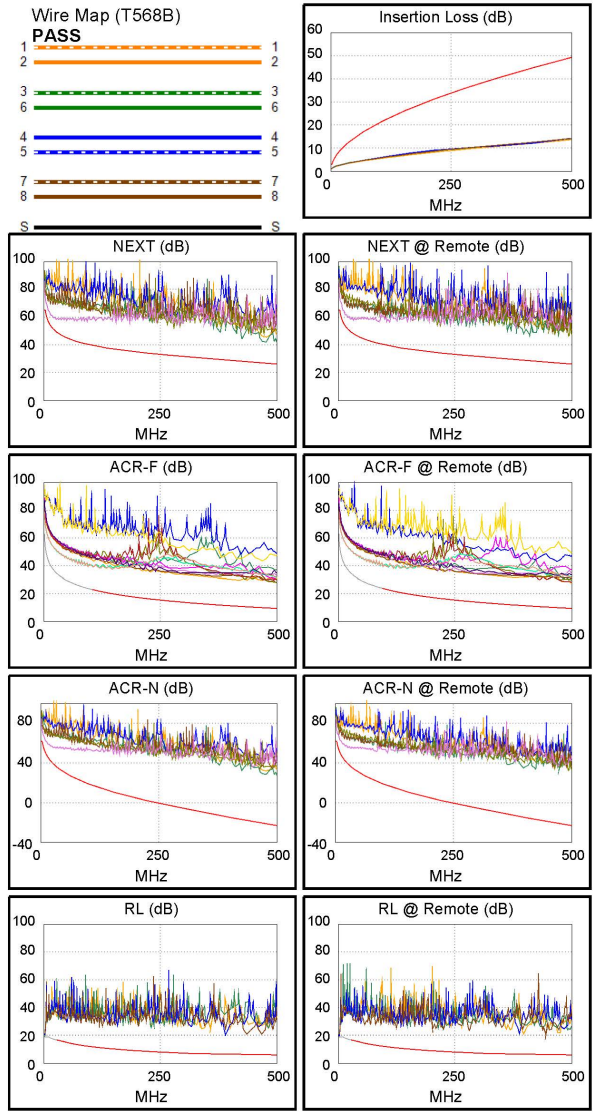
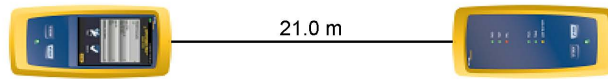
Date / Time: 04/19/2023 10:57:28 AM  
 Headroom 7.7 dB (NEXT 4,5-7,8)  
 Test Limit: TIA Cat 6A Channel  
 Cable Type: Cat 6A S/FTP  
 NVP: 77.0%

Software Version: V6.6 Build 2  
 Limits Version: V7.6  
 Calibration Start Date:  
 Main (Module): 09/26/2022  
 Remote (Module): 09/26/2022

**Test Summary: PASS**

Model: DSX-8000  
 Main S/N: 1830072  
 Remote S/N: 1830152  
 Main Adapter: DSX-CHA804  
 Remote Adapter: DSX-CHA804

Length (m), Limit 100.0	[Pair 7,8]	21.0
Prop. Delay (ns), Limit 555	[Pair 4,5]	93
Delay Skew (ns), Limit 50	[Pair 4,5]	2
Resistance (ohms)	[Pair 3,6]	9.07
Insertion Loss Margin (dB)	[Pair 4,5]	35.1
Frequency (MHz)	[Pair 4,5]	500.0
Limit (dB)	[Pair 4,5]	49.3



	Worst Case Margin		Worst Case Value	
<b>PASS</b>	MAIN	SR	MAIN	SR
Worst Pair	4,5-7,8	4,5-7,8	1,2-4,5	1,2-4,5
<b>NEXT (dB)</b>	7.7	8.1	14.6	17.8
Freq. (MHz)	15.0	15.0	471.0	423.0
Limit (dB)	53.7	53.7	26.8	28.1
Worst Pair	4,5	4,5	1,2	4,5
<b>PS NEXT (dB)</b>	9.4	9.8	16.2	20.5
Freq. (MHz)	9.5	14.4	471.0	473.0
Limit (dB)	54.4	51.4	23.9	23.9
<b>PASS</b>	MAIN	SR	MAIN	SR
Worst Pair	7,8-4,5	4,5-7,8	3,6-4,5	1,2-3,6
<b>ACR-F (dB)</b>	15.4	15.5	18.8	18.5
Freq. (MHz)	72.5	72.5	499.0	498.0
Limit (dB)	26.1	26.1	9.3	9.3
Worst Pair	4,5	4,5	3,6	3,6
<b>PS ACR-F (dB)</b>	16.3	16.2	18.8	18.1
Freq. (MHz)	1.0	1.0	471.0	499.0
Limit (dB)	60.3	60.3	6.8	6.3
<b>N/A</b>	MAIN	SR	MAIN	SR
Worst Pair	4,5-7,8	4,5-7,8	1,2-4,5	3,6-7,8
<b>ACR-N (dB)</b>	10.9	10.9	50.7	55.1
Freq. (MHz)	3.6	3.0	500.0	493.0
Limit (dB)	59.8	61.4	-23.2	-22.7
Worst Pair	4,5	4,5	1,2	4,5
<b>PS ACR-N (dB)</b>	12.1	13.0	50.8	54.9
Freq. (MHz)	3.5	3.4	471.0	473.0
Limit (dB)	57.6	57.9	-23.8	-24.0
<b>PASS</b>	MAIN	SR	MAIN	SR
Worst Pair	4,5	7,8	4,5	7,8
<b>RL (dB)</b>	14.0	13.1	14.2	14.3
Freq. (MHz)	49.5	57.0	389.0	445.0
Limit (dB)	15.1	14.4	6.1	6.0

Compliant Network Standards:  
 10BASE-T      100BASE-TX      100BASE-T4  
 1000BASE-T    2.5GBASE-T      5GBASE-T  
 10GBASE-T    ATM-25            ATM-51  
 ATM-155      100VG-AnyLan    TR-4  
 TR-16 Active    TR-16 Passive



**Short Description**

1. 4 x 2 AWG 26/7

2. 500MHz performance Bandwidth
3. Transmission: 10Gbit
4. Suitable for PoE, PoE+
5. Stranded bare copper conductor
6. Foil and braid shield Reduces EMI/RFI interference
7. PIMF (Pairs in metal Foil)
8. Molded boot with Strain relief
9. RoHS compliant
10. Low Smoke Zero Halogen (LSZH/LSOH)
11. Compliant with ISO/IEC 11801 and EN 50173

## Description

---

The equip® Cat.6A S/FTP Patch Cord is composed of preeminent materials and fully-examined to conform with industrial standards. Offering higher bandwidth and better signal-to-noise margin, the Cat.6A cable is able to deliver ultrahigh and error-free performance in the most demanding network environments, specially for 10G application

## Additional Information

---

Approval and compliance	RoHS
Conductor material	Copper
Conductor size (AWG)	26AWG
Jacket material	LSZH
Category	Cat.6A
Flat cable	No
Shielded	Yes
Product weight (kg)	0.24
Cable length	7.5m
Color	Grey
EAN	4015867229644
Model Number	606707
Package contents	606707
Cable Length	7.5m
Shielding	S/FTP
Connector 1	RJ45 male
Connector 2	RJ45 male
Dimensions (W x D x H)	8.34 x 11.68 x 7500 mm

