

## Dataflex Viewmate monitor arm - toolbar 142

**Brand :** Dataflex

**Product code:** 52.142

**Product name :** Viewmate monitor arm - toolbar 142

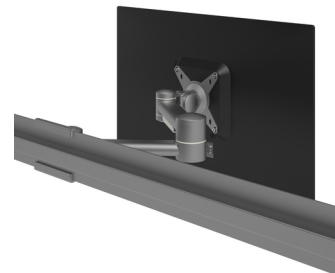
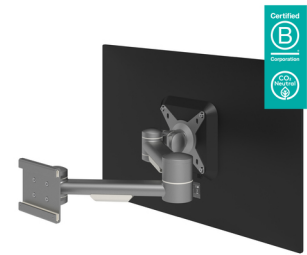
Viewmate monitor arm - toolbar 142, silver

[Dataflex Viewmate monitor arm - toolbar 142:](#)

Having a durable construction, this monitor arm offers solid support for any monitor up to 15 kg. Its depth adjustment ensures that monitors can be set at a comfortable viewing distance. Its horizontal glide makes it easy to place anywhere along the toolbar.

- Fixed height
- Depth adjustment
- Fitted with cable clips to guide cables tidily
- Main components made of steel
- VESA MIS-D 75 x 75/100 x 100 mm compatible
- Rotate 360°, tilt +90°/-90°, swivel +90°/-90°
- Weight capacity max. 15 kg per monitor
- Mount exclusively compatible with Viewmate toolbars
- Simply slides onto the toolbar rail

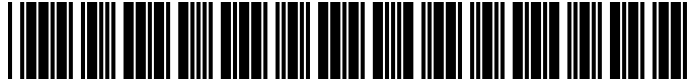
Dataflex Viewmate monitor arm - toolbar 142. Maximum weight capacity: 15 kg, Minimum VESA mount: 75 x 75 mm, Maximum VESA mount: 100 x 100 mm. Swivel angle range: -90 - 90°, Tilt angle range: -90 - 90°. Product colour: Silver



Mounting		Design	
Maximum weight capacity *	15 kg	Housing material	Steel
Number of displays supported *	1	Product colour *	Silver
Mounting type *	Wall	<b>Weight &amp; dimensions</b>	
Minimum VESA mount *	75 x 75 mm	Depth	492 mm
Maximum VESA mount *	100 x 100 mm	<b>Packaging data</b>	
Ergonomics		Package width	550 mm
Height adjustment	✗	Package depth	130 mm
Adjustable depth	✓	Package height	120 mm
Tilt angle range	-90 - 90°	Package weight	2.3 kg
Swivel angle range	-90 - 90°	<b>Packaging content</b>	
Angle of rotation	360°	Manual	✓
Turn angle	180°	<b>Logistics data</b>	
Number of pivot points	3	Harmonized System (HS) code	85299097
Cable management	✓		



0805410521424



805410521424

### Catalog Object Cloud



Disclaimer. The information published here (the "Information") is based on sources that can be considered reliable, typically the manufacturer, but this Information is provided "AS IS" and without guarantee of correctness or completeness. The Information is only indicative and can be changed at any time without notification. No rights can be based on the Information. Suppliers or aggregators of this Information do not accept any liability with regard to the content of (web)pages and other documents, including its Information. The publisher of the Information can not be held liable for the content of 3rd party websites that are linking this Information or are linked to from this Information. You as the User of the Information are solely responsible for the choice and usage of this Information. You are not entitled to transfer, copy or otherwise multiply or distribute the Information. You are obliged to follow the directions of the copyright owner(s) with regard to the use of the Information. Exclusively Dutch law is applicable. With regard to price and stock data on the site, the publisher followed a number of starting points, which are not necessarily relevant for your private or business circumstances. Therefore, the price and stock data are only indicative and are subject to changes. You are personally responsible for the way you use and apply this information. As a user of the Information or sites or documents in which this Information is included, you will adhere to standard fair use including avoidance of spamming, ripping, intellectual-property violations, privacy violations, and any other illegal activity.